

CHATEAU DE VARENNES

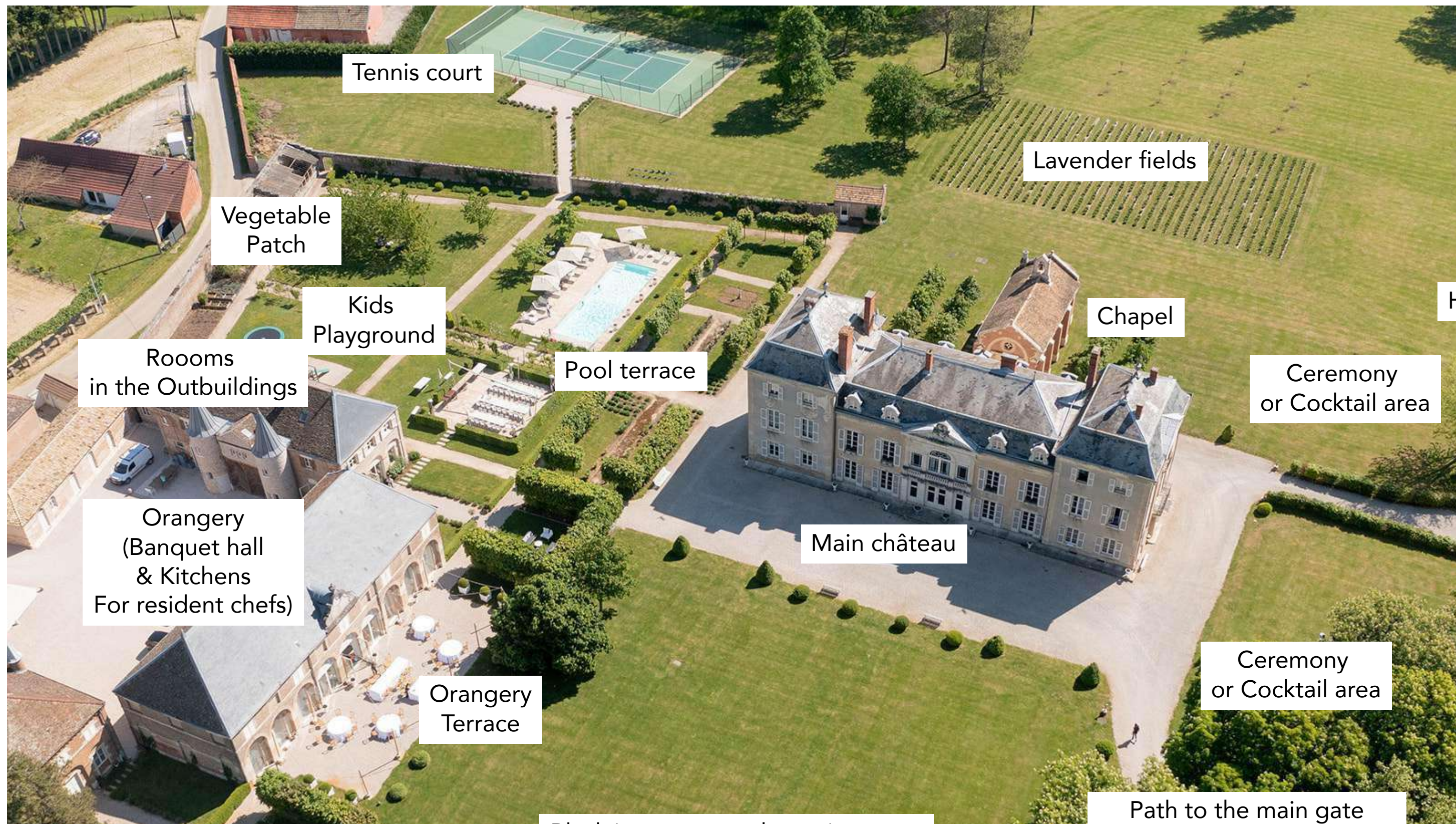
CHATEAU TOUR



BEDROOM DESCRIPTION



GENERAL LAYOUT OF THE PROPERTY



Tennis court

Lavender fields

Vegetable Patch

Kids Playground

Rooms in the Outbuildings

Pool terrace

Chapel

Horse fields

Ceremony or Cocktail area

Orangery (Banquet hall & Kitchens For resident chefs)

Main château

Ceremony or Cocktail area

Orangery Terrace

Black iron gate on the main street (for decoration purpose only)

Path to the main gate (and rooms in the cottages)

DETAILED DESCRIPTION OF THE BEDROOMS

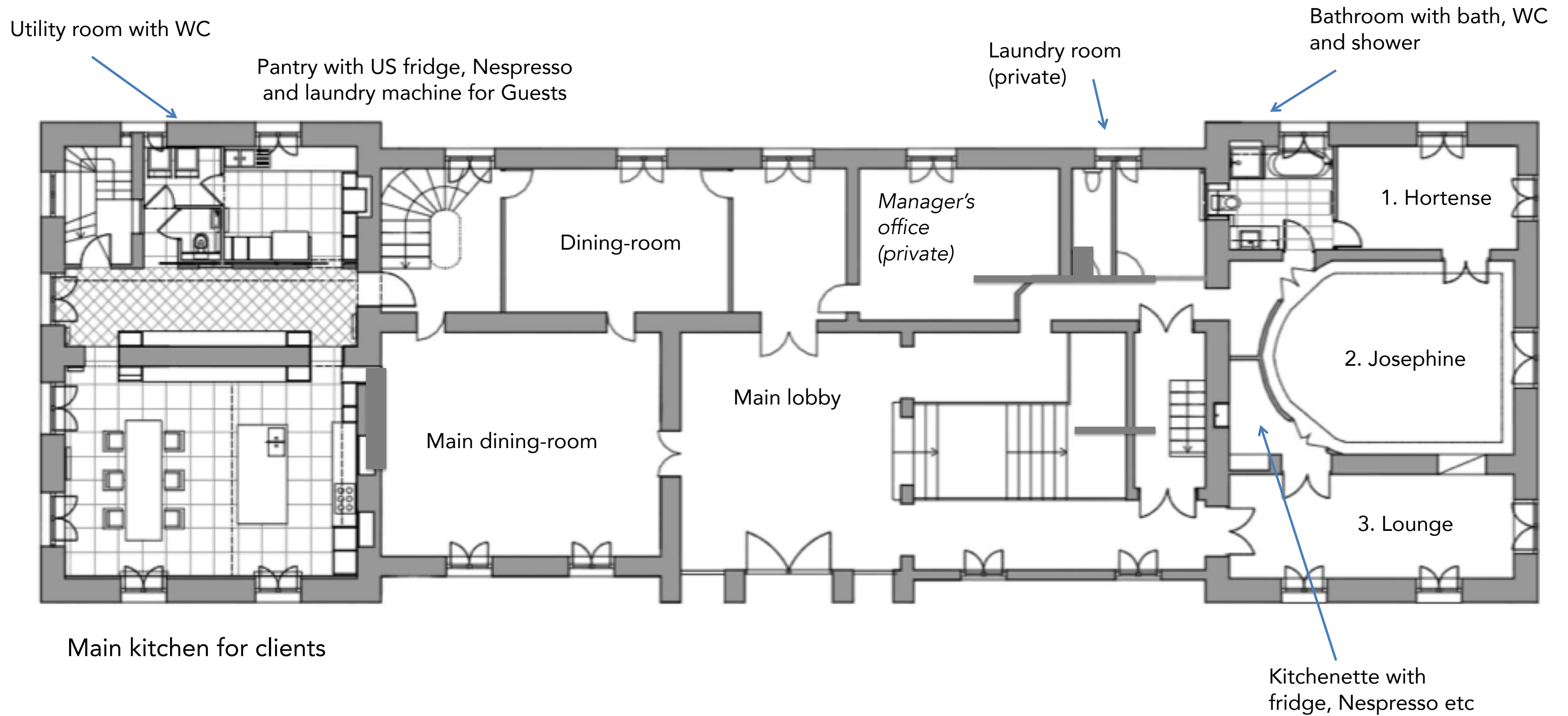
The property was fully refurbished recently with new electricity, plumbers, heating, Internet access, beds etc
There are 24 bedrooms in total (9 master suites, 11 double bedrooms and 4 attached rooms) + 20 bathrooms
17 Bedrooms are in the main chateau building

- 1, 2&3 : Josephine & Hortense (family suite/ 2 bedroom apartment on the ground floor)
- 10, 11&12 : Marie-Antoinette, Beatrice & Sophie (family suite = master + 2 double rooms on the first floor)
- 14: Princess (honeymoon suite on the first floor)
- 15: Valentine (Superior double room on the first floor)
- 16: Germaine (Classic double room on the first floor)
- 21 : Diane (Superior double room on the top floor)
- 22 : Athenais (Superior double room on the top floor)
- 23: Gabrielle (Classic double room on the top floor)
- 24-25-26-27-28-29 : six Deluxe suites on the top floor

7 extra Bedrooms are in the Outbuildings and the Cottages

- OUTBUILDINGS: 101, 102, 103, 104 - Superior double rooms + 105 (Twin attached room)
- COTTAGES: 301, 302 : Superior double rooms
- The extra rooms in the outbuildings and cottages may not be included in your package but can be rented upon request (please confirm their availability with our Venue Coordinator)

GROUND FLOOR OF THE MAIN CHATEAU BUILDING



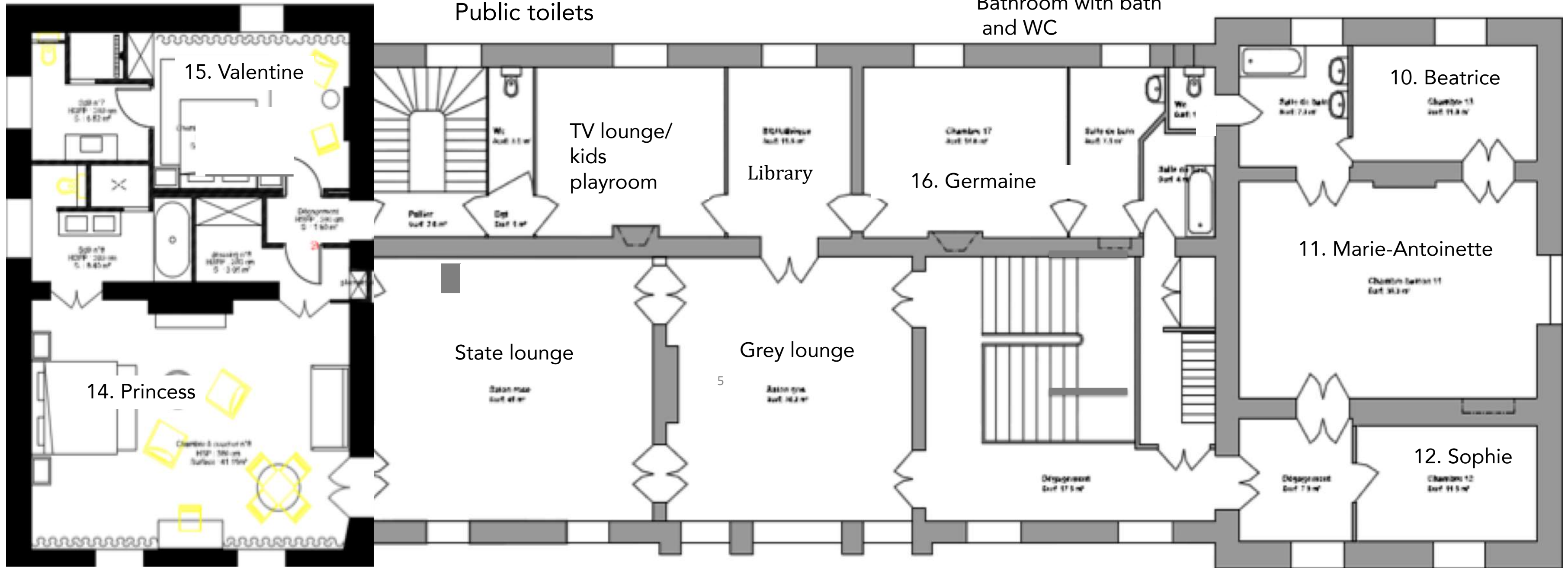
FIRST FLOOR OF THE MAIN CHATEAU BUILDING

Bathroom with shower and WC

Bathroom with bath and WC

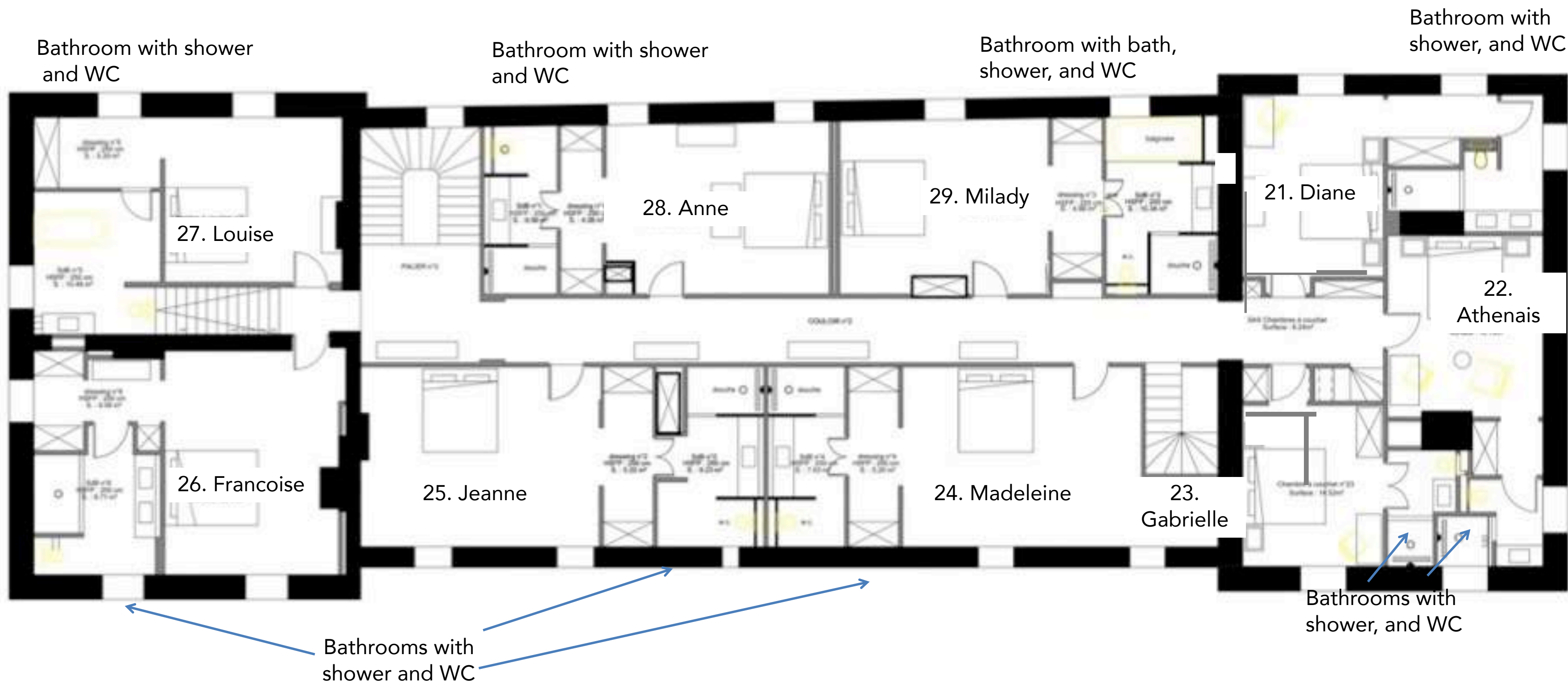
Public toilets

Bathroom with bath and WC



Bathroom with bath, shower and WC

TOP FLOOR OF THE MAIN CHATEAU BUILDING



JOSEPHINE (FAMILY SUITE 1, 2, 3)



ROOM #2 : JOSEPHINE

King size bed: 180*200cm

- Located on ground floor (South wing / Horsefield side)
- Color : off-white except the bathroom which is grey
- Located on ground floor, South wing
- Direct access to the gardens and easy access for disabled people (no stairs)
- Full contained apartment (70+ sqm)



#1 : HORTENSE

Single or twin beds



PRIVATE LOUNGE

- Master bedroom with double or twin bed (Josephine)
- Small attached bedroom with single or twin beds (Hortense)
- Private lounge and small kitchenette with a sink
- Separate closets
- Family bathroom

JOSEPHINE FAMILY BATHROOM



- Family bathroom
- Large bath tube
- Shower
- Wash-basin & WC
- Other WC are available on the ground floor near the kitchens or on the first floor near the lounge or in the pool house or in the Orangery

MARIE-ANTOINETTE FAMILY SUITE (10,11, 12)

MASTER BEDROOM 11 : Marie Antoinette

- Located on first floor (South wing / Horsefield side)
- Balcony over the park
- Total size of the suite: 75 sqm



- King size bed (180x200cm)
- Cannot be split in twin
- But extra beds can be added



MARIE-ANTOINETTE FAMILY SUITE

ATTACHED BEDROOM 10 (BEATRICE)



ATTACHED BEDROOM 12 (SOPHIE)

- Located on first floor (South wing)
- Independent access but shared bathroom
- with Marie-Antoinette-11 (or with Germaine-16)
- 12 sqm with double Queen bed: 140*200cm and bespoke closets



- Located on first floor (South wing)
- Attached to room 11
- 12 sqm with double Queen bed (140*200cm)
- Bespoke closets

MARIE-ANTOINETTE FAMILY BATHROOM



- Family bathroom
- Big bath tube
- Wash-basin
- Dressing table
- Separate WC



PRINCESS SUITE (14)

- Located on first floor (Pool side)
- All white with a touch of gold
- Custom-made furnishings by Hermes the famous luxury brand based in Paris
- Total size: 55 sqm and 4 meter high ceiling
- Master bedroom with Emperor size bed (200*200cm)

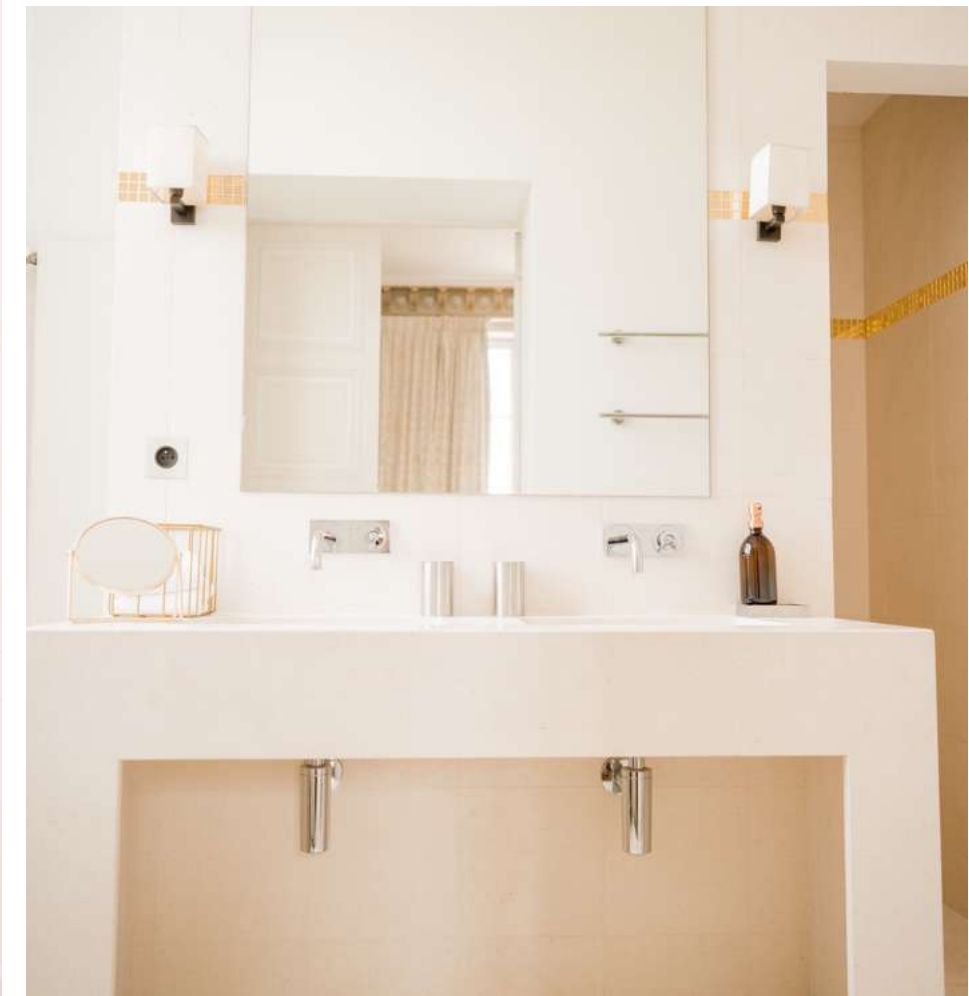
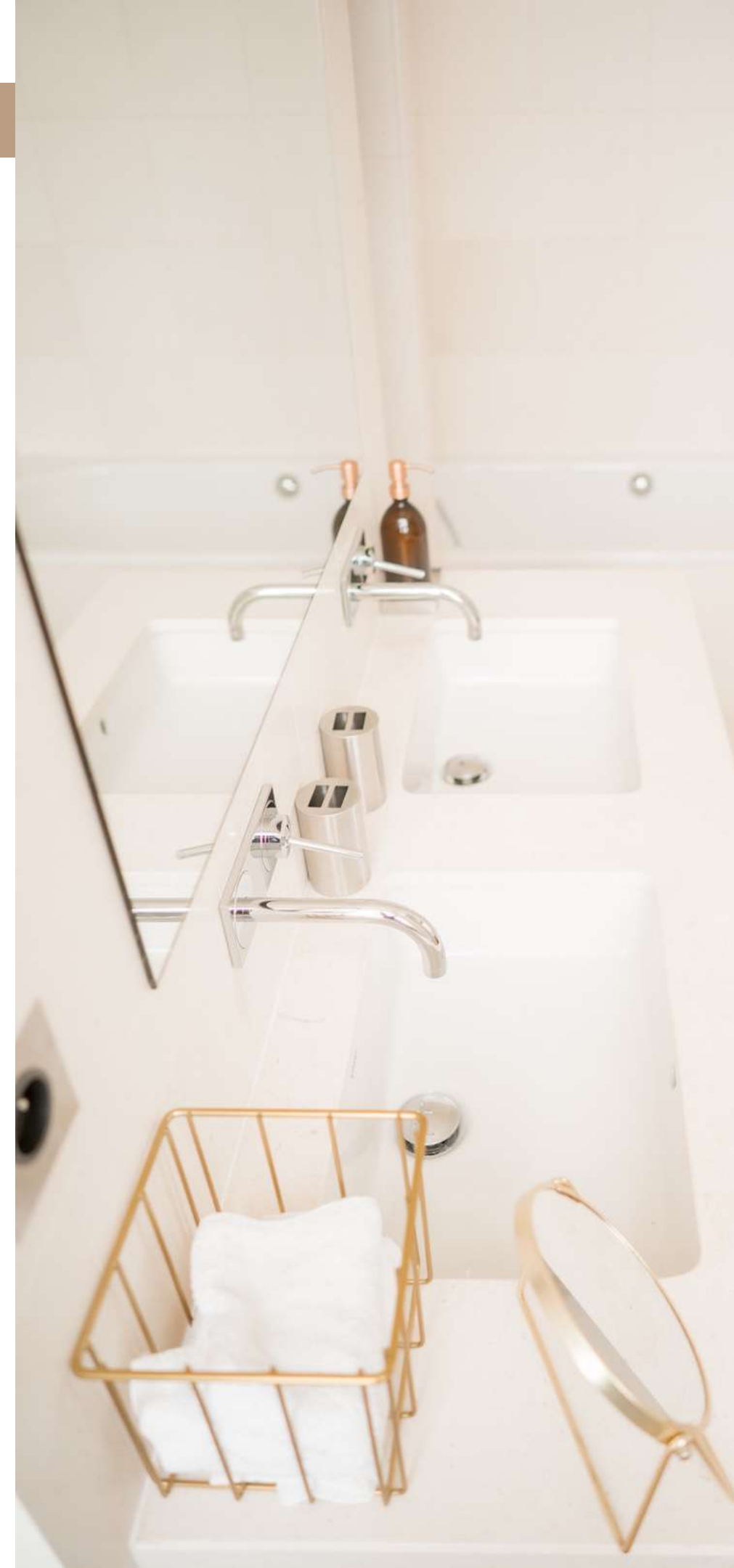


PRINCESS SUITE (14)



PRINCESS BATHROOM (14)

- Luxury bathroom with marbles and gold mosaic tiles
- All white with a touch of gold
- Bath-tube, walk-in shower,
- Double wash-basin & WC



VALENTINE (SUPERIOR DOUBLE ROOM 15)



- First floor
- In front of the Princess suite
- Lavender field side
- Total size: 25 sqm.
- Bespoke walk-in closet
- King size bed (180*200cm)
- Can be split in twin beds

- Ensuite marble bathroom
- Walk-in shower, wc, wash-basin
- Furnishings by Hermes
- A baby cot can be added

GERMAINE (SUPERIOR DOUBLE ROOM 16)



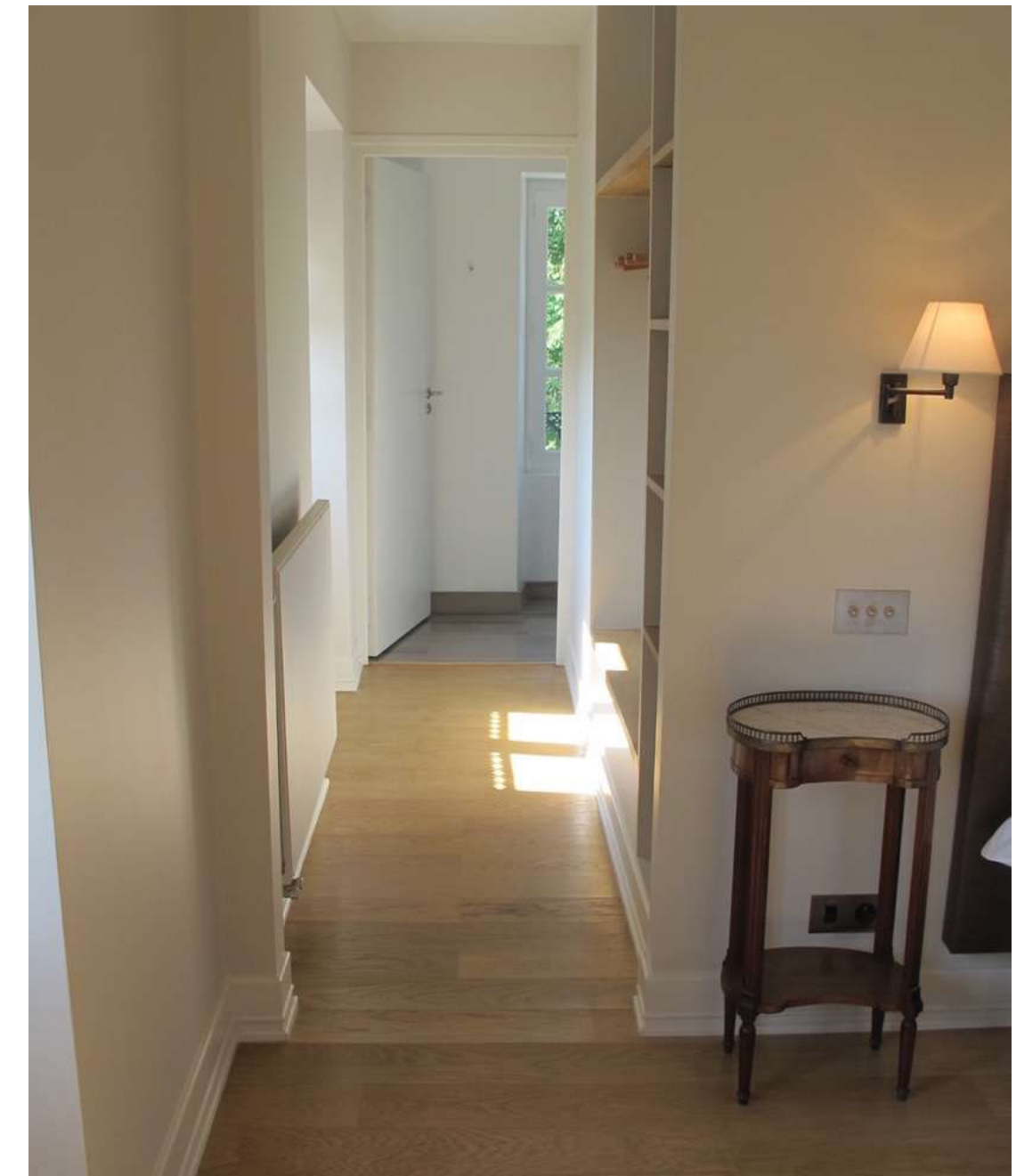
- First floor (central building, Lavender fields, Chapel side)
- Total size of 27 sqm
- Double bedroom with King sized bed 180*200cm (cannot be split in twin)
- Furnishings by Hermes
- En-suite bathroom
- Big bath-tube
- Wash-basin & WC
- Dressing-table



DIANE (SUPERIOR DOUBLE ROOM 21)



- Located on East side (Chapel side)
- King size bed : double (180x200cm) or twin beds (2x90x200cm)
- Total size of 27 sqm
- Furnishings by Hermes
- Ensuite bathroom with walkin shower, basin and WC



ATHENAIS (SUPERIOR DOUBLE ROOM 22)



- Top floor (South wing,)
- Balcony overlooking the horsefields
- Total size of 27 sqm
- Furnishings by Hermes



- King size bed (180*200cm)
- Can be split in two twin beds
- Ensuite marble bathroom
- Brown marbles
- Walkin shower
- WC & wash-basin

GABRIELLE (CLASSIC DOUBLE ROOM 23)



- Top floor (West / Vineyard side)
- King size bed (180*200cm)
- Total size of 25 sqm
- Furnishings by Hermes

- Ensuite marble bathroom
- Walkin shower
- WC& wash-basin



MADELEINE (DELUXE SUITE 24)



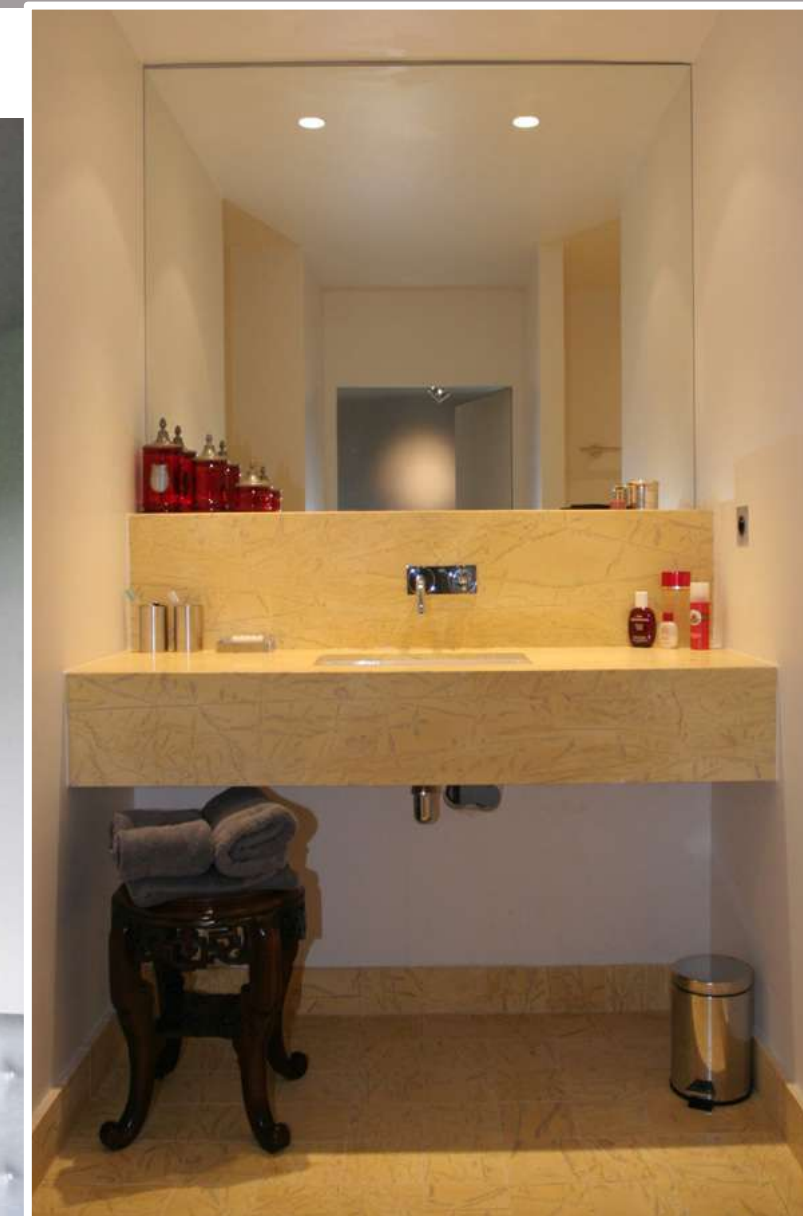
- Emperor size bed (200*200 cm)
- Can be transformed in twin beds (2*100 cm)

- Top floor (Central building, Vineyard side)
- Total size: 40 sqm
- Two bespoke walk-in closets
- Furnishings by Hermes

- Large ensuite bathroom
- Walk-in shower
- WC & wash-basin
- Luxury Carrara marbles



JEANNE (DELUXE SUITE 25)



- Top floor
- Central building
- Vineyard side
- Total size: 40 sqm
- Two bespoke walk-in closets

- Emperor size bed (200*200 cm)
- Can be transformed in twin beds (2*100 cm)
- Furnishings by Hermes
- Large ensuite bathroom
- Walk-in shower, wc, wash-basin
- Luxury yellow marble floors and tops

FRANCOISE (DELUXE SUITE 26)



- Located on top floor
- Pool / vineyard side
- Total size: 40 sqm
- Large double or Family suite
- Bespoke walk-in closet
- Emperor size bed (200*200cm)
- Can be split into twins (2*100cm)
- Furnishings by Hermes

FRANCOISE BATHROOM (26)



- Very spacious luxury ensuite bathroom
- White Carrara marbles
- XL walk-in shower, wc
- Double wash-basins

LOUISE (DELUXE SUITE 27)



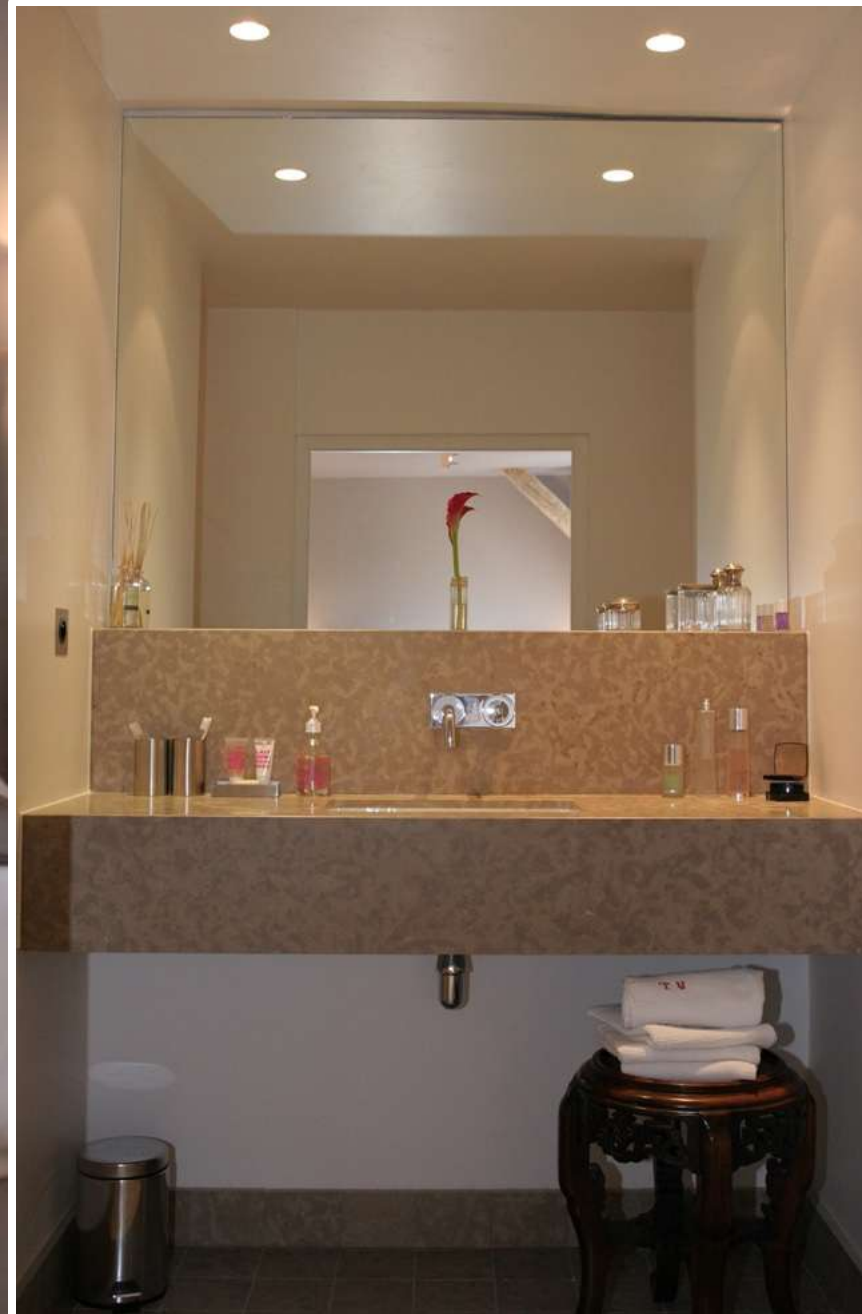
- Top floor (Pool / Lavender fields side)
- Total size: 35 sqm
- Master bedroom
- Bespoke walk-in closet and attached study room



- Emperor size bed (200*200 cm)
- Can be split into twins (2*100 cm)
- Furnishings by Hermes
- Luxury ensuite bathroom
- Grey marbles
- Walk-in shower & wc
- Wash-basin

ANNE (DELUXE SUITE 28)

- Total size: 32 sqm
- Master bedroom
- Two bespoke walk-in closets
- King size bed (180*200 cm)
- Can be split in twin (2*90 cm)



- Furnishings by Hermes
- Ensuite bathroom with brown marbles
- Walkin shower
- Wash-basin & WC



MILADY (DELUXE SUITE 29)



- Located on second floor
- Central building, Chapel side
- Total size: 35 sqm
- Two bespoke walk-in closets
- Emperor bed (200*200 cm)
- Can be split into twins (2*100 cm)
- Furnishings from Hermes
- Ensuite marble bathroom
- Small bath-tube (for kids)
- XL walk-in shower, wc, wash- basin





ROOMS IN THE OUTBUILDINGS

The extra rooms in the outbuildings are recently refurbished and may not be included in your package but can be rented upon request (please confirm their availability with our Venue Coordinator)

THE OUTBUILDINGS ARE NEXT TO THE POOL TERRACE



Orangery

Rooms
in the Outbuildings

Vegetable patch
+ Kids' playground

Pool terrace

Towards the main château building

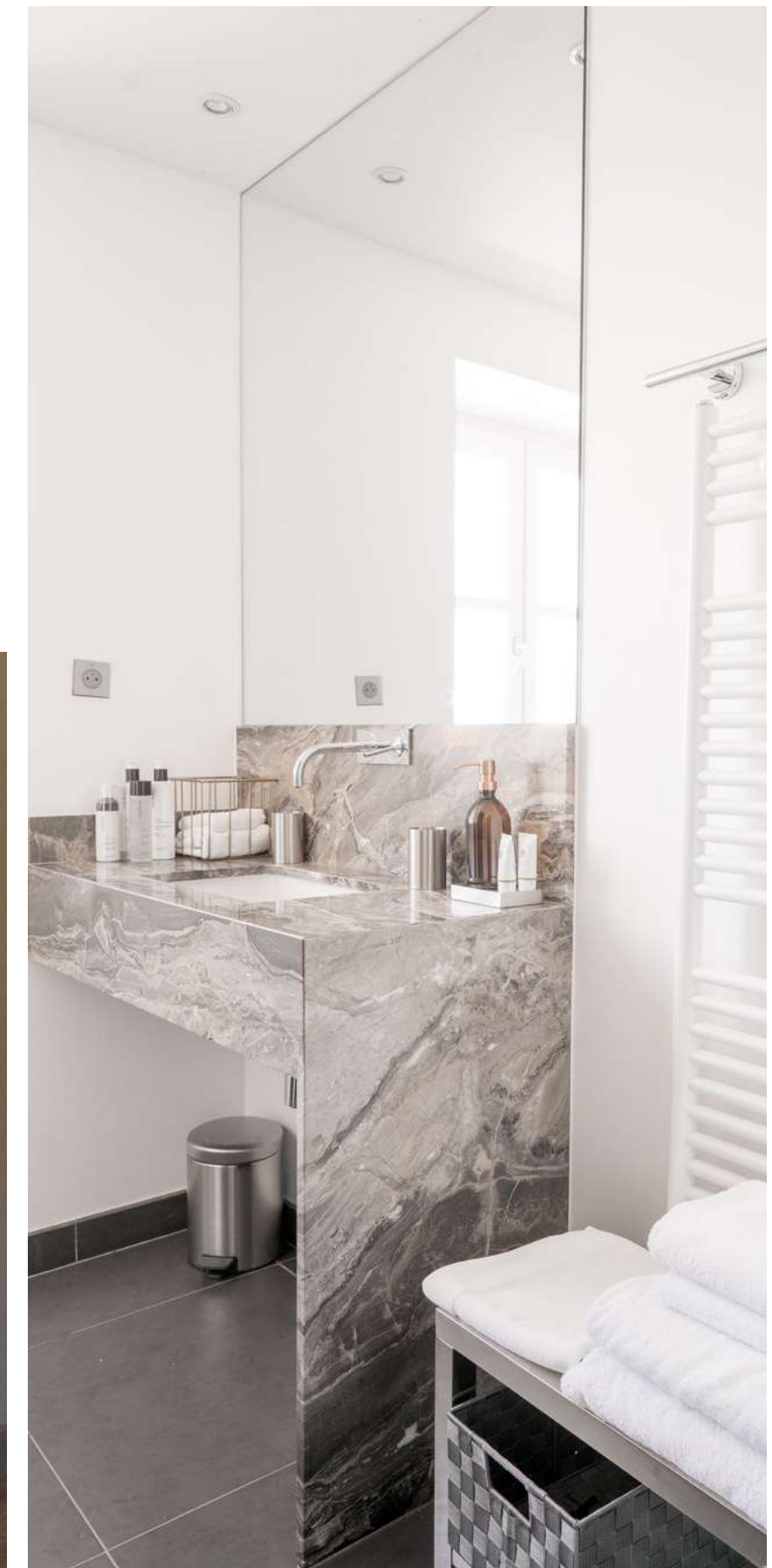
CLASSIC SUITE 101



- Double King size or twin bed
- Private staircase
- Nespresso machine and tea Kettle in each room of the outbuildings
- Luxury furnishings from Hermes Paris
- Very spacious ensuite bathroom
- Dark grey marbles
- XL walk-in shower
- Wash-basin & WC

CLASSIC SUITE 102

- Double or twin bed
- Nespresso machine and tea kettle
- Wall mounted TV
- Furnishings from Hermes Paris
- Marble ensuite bathroom
- Walkin shower
- Washbasin & WC



CLASSIC SUITE 103



- Double King sized or twin bed
- Nespresso machine
- Tea kettle
- Wall mounted TV
- Furnishings from Hermes
- Marble ensuite bathroom
- Walkin shower
- Washbasin & WC



CLASSIC ROOM 104



Queen size bed (only double)



Nespresso machine and tea kettle



Sometimes not included in packages as it can also be used for our staff

- Wall mounted TV
- Furnishings from Hermes
- Marble ensuite bathroom
- Walk-in shower
- Wash-basin & WC

TWIN OR SINGLE ROOM 105



Private corridor



- Private WC
- Shared shower with 101, 102, 103 or 104



- Single or twin bed
- Nespresso machine
- Tea kettle
- Furnishings from Hermes



Private toilets



ROOMS IN THE COTTAGES

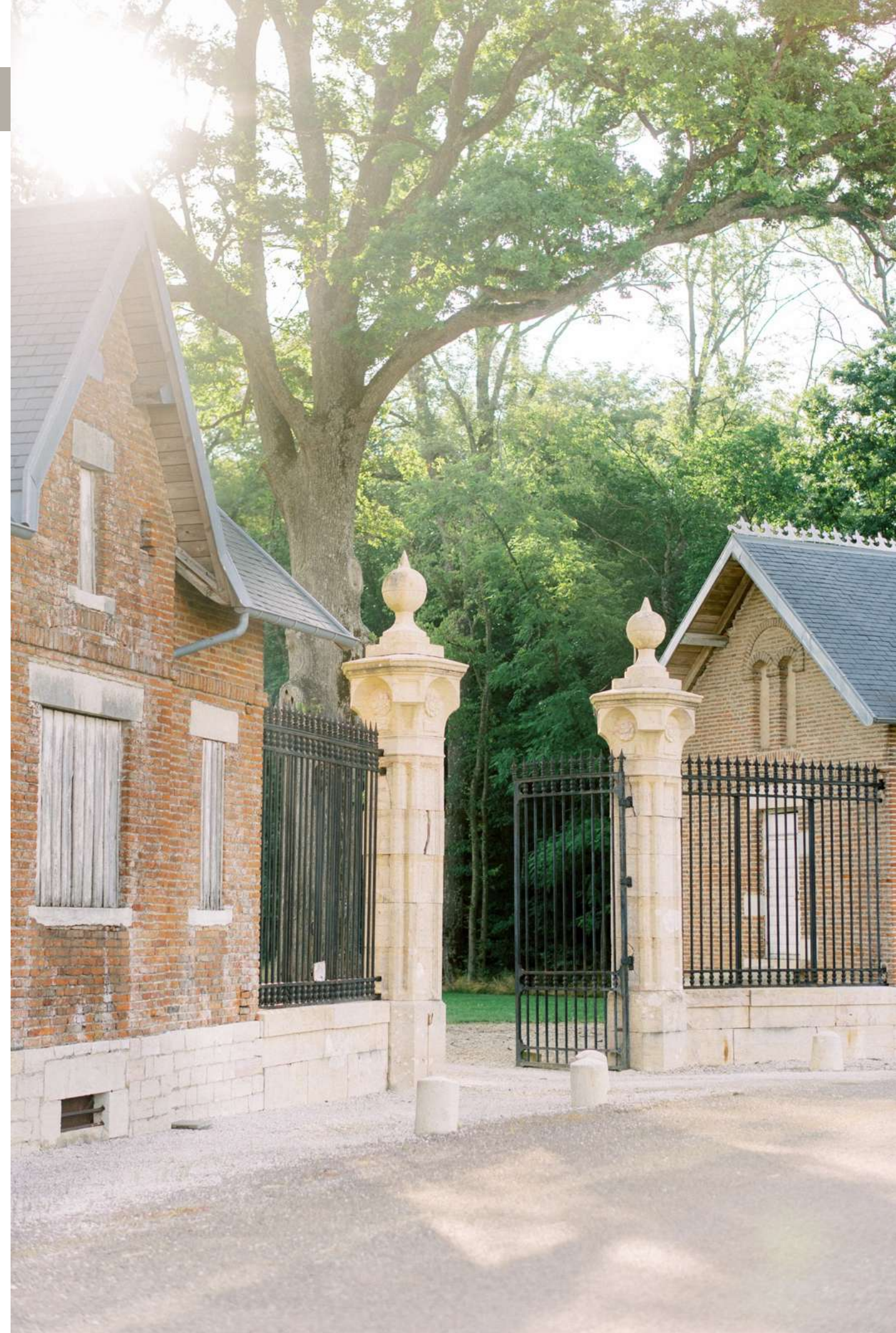
The extra rooms in the outbuildings are new and are not included in your package but can be rented upon request (please confirm their availability with our Venue Coordinator)



ROOMS IN THE COTTAGES : 301, 302, 303 & 304

- The cottages are currently being refurbished and will be ready for Spring 2025
- Each cottage has a self contained apartment with a mini kitchen and an en-suite bathroom
- Walk-in shower
- Wash-basin & WC

Not included in packages (Please check availability with our Venue Coordinator)





See you soon !