

CHÂTEAU DE VARENNES

DESCRIPTION OF EVENT FACILITIES

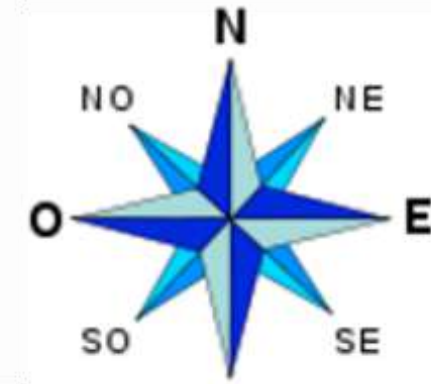
TABLE OF CONTENTS

01	Aerial view of the main building, pool and orangery	p.3	06	View from the gates	p. 13
02	Outdoor gardens	p. 4-5	07	Plans and structure of the orangery	p. 14-21
03	Dimensions of the main building	p. 6	08	Ideas for original photo shoots in the chateau	p. 22
04	Aerial view from the chapel	p. 7-8	09	Ideas for original photo shoots near the chateau	p. 23
05	Aerial view of pool terrace, child playground and gardens	p. 9-12	10	Contacts	p. 24

AERIAL VIEW OF THE MAIN BUILDING, POOL AND ORANGERIE



OUTDOOR GARDENS



- Vendor parking :
2 Impasse du loup
- Visitor parking :
2 grande rue de Bourgogne (D473)
- Postal code :
71270 Varennes sur le Doubs (can
be listed under Charette Varennes
for some GPS)

**Gate in front of the Château
(just for decor, cannot be open)**

**Vendor parking
(caterer, DJ)**

**Playground for children, orchard,
and vegetable patch**

Pool terrace

Pool area

**Orangery and its
terrace
(for cocktails
and wedding
reception)**

access to French gardens

Chapel

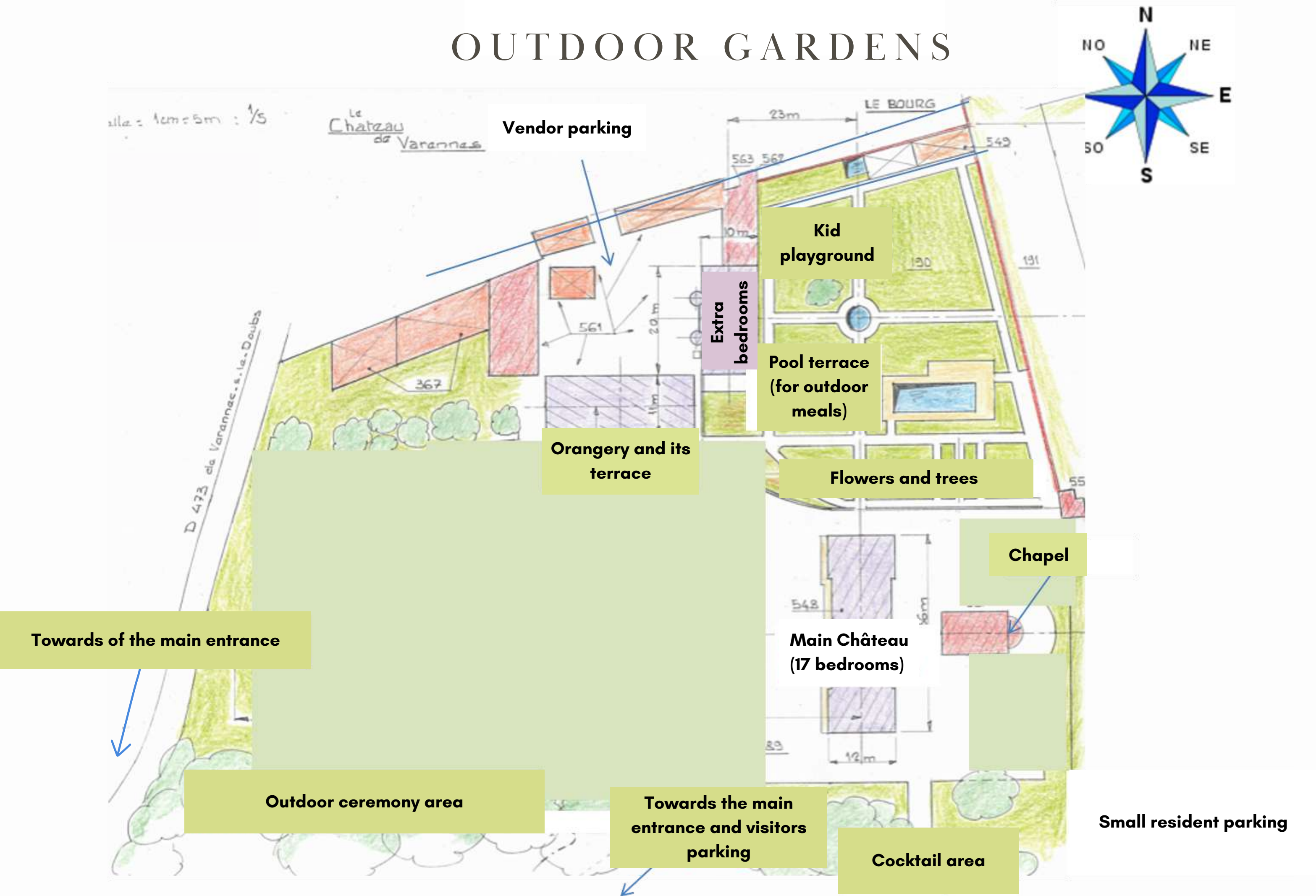
**Main
Château**

**Towards the
main entrance
and visitor
parking**

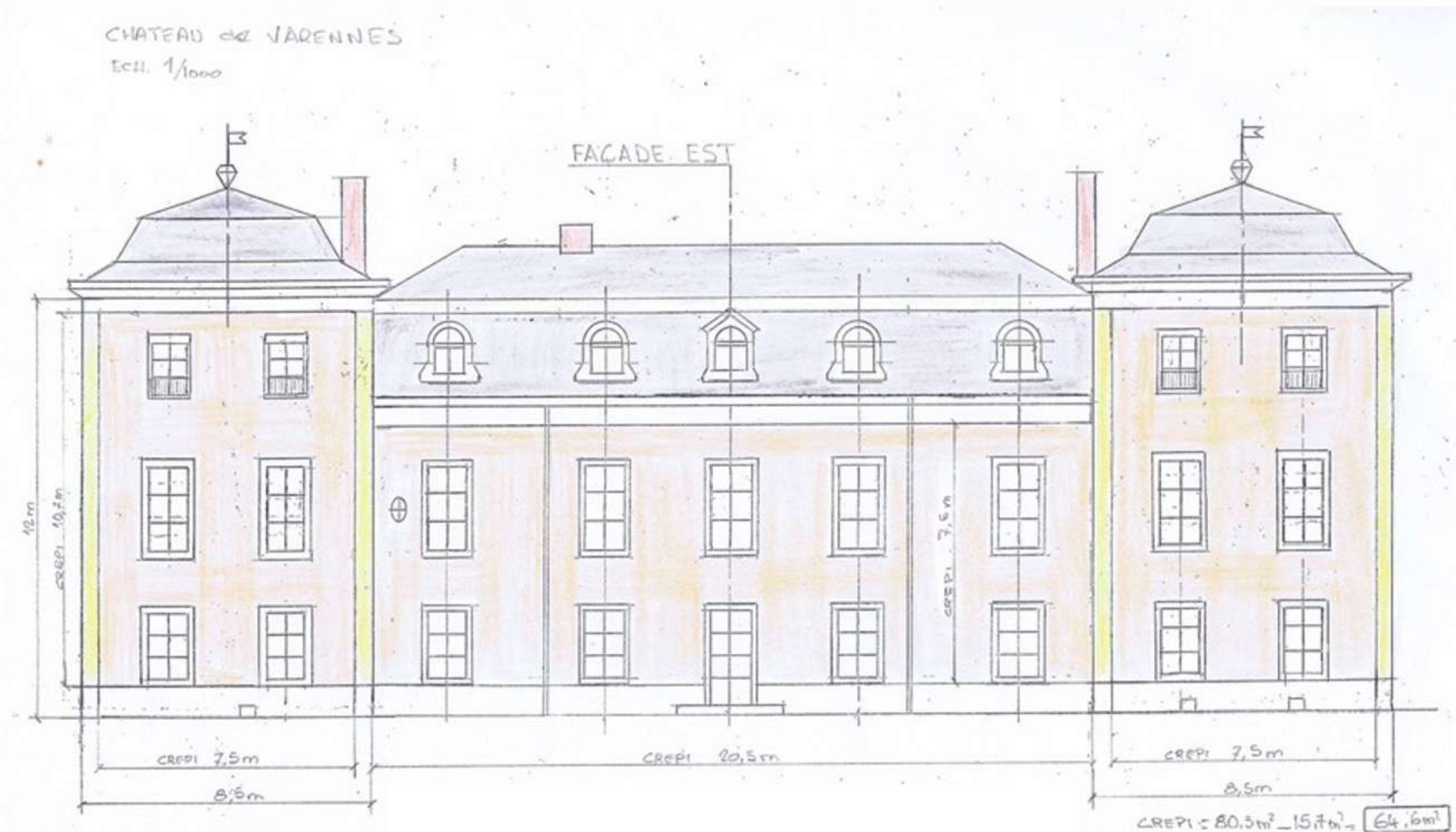
**Area used for
outdoor
ceremony**

**Resident parking
(closed if outdoor
ceremony)**

OUTDOOR GARDENS



DIMENSIONS OF THE MAIN BUILDING



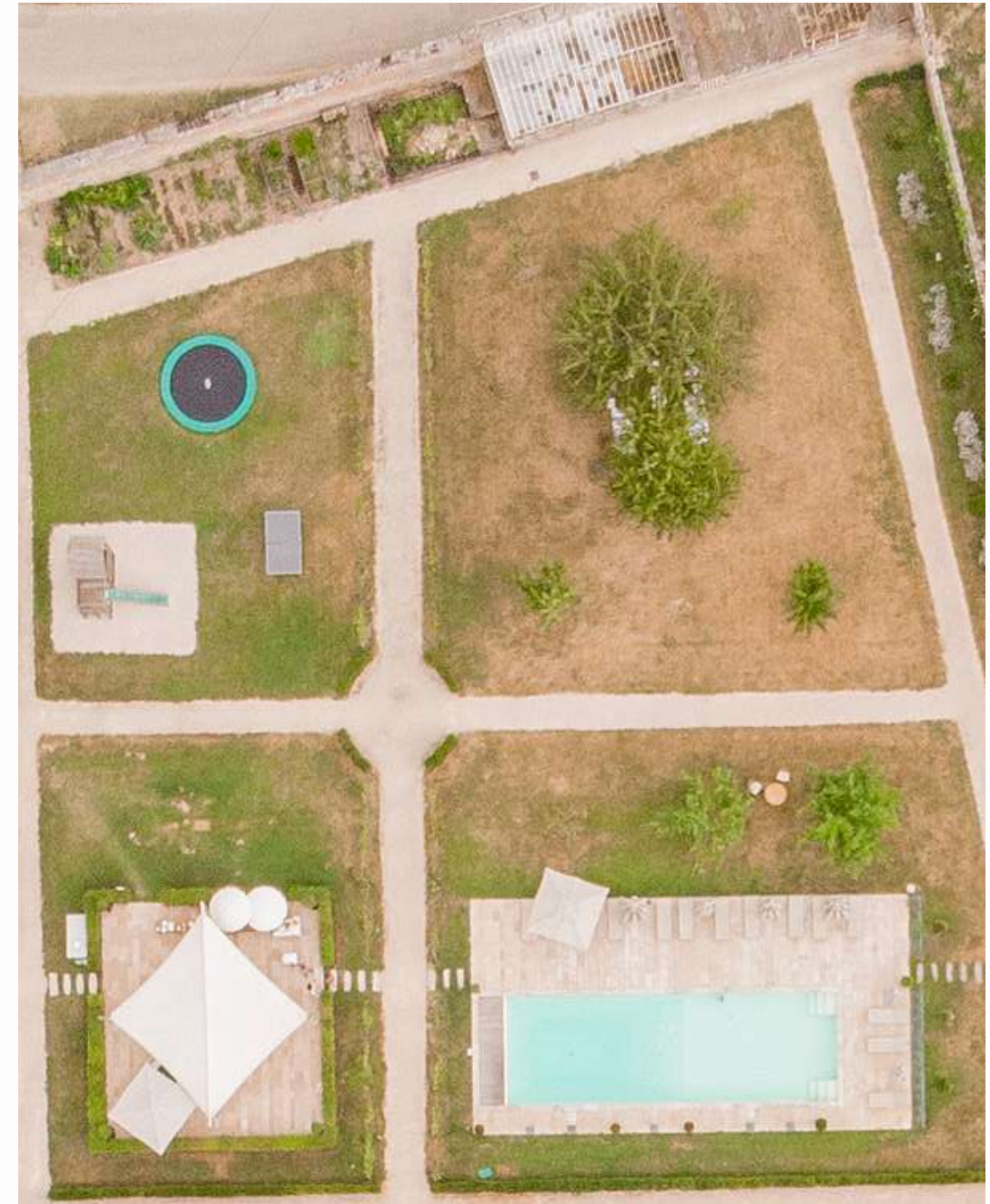
AERIAL VIEW FROM THE CHAPEL



INTERIOR AND EXTERIOR OF THE CHAPEL



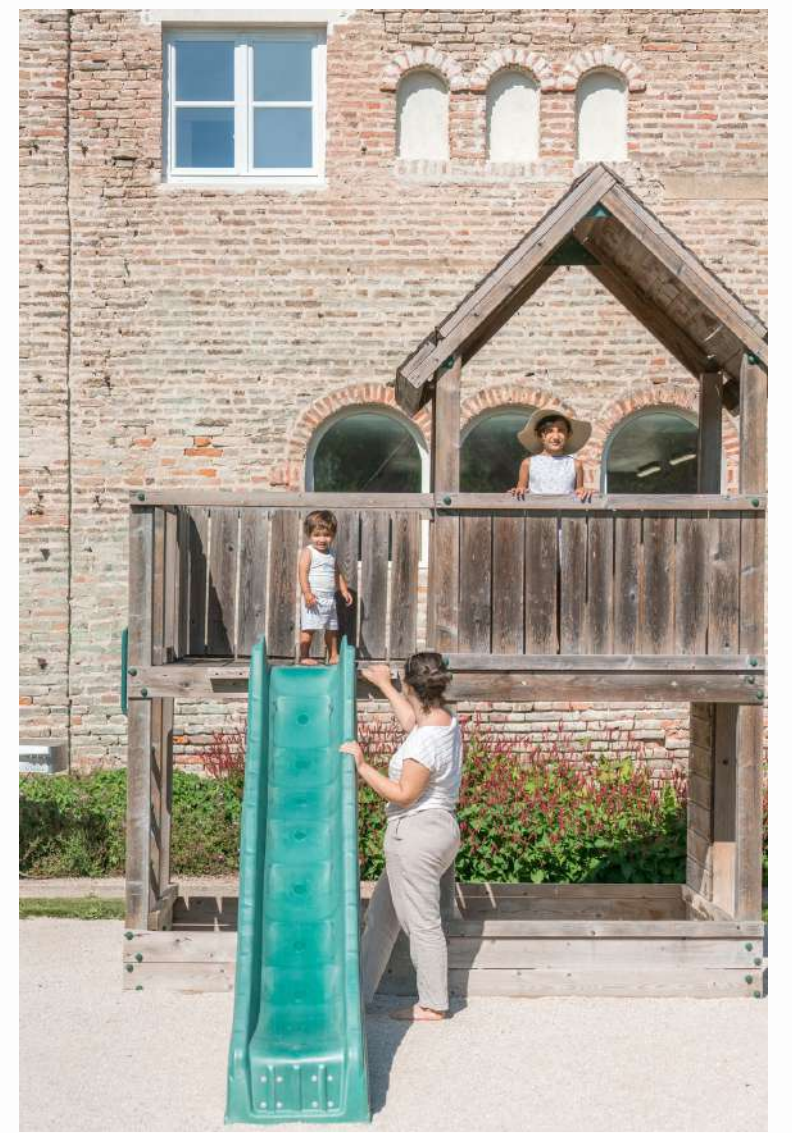
AERIAL VIEW OF POOL TERRACE, CHILDREN PLAYGROUND AND GARDENS



THE POOL AREA



THE CHILDREN PLAYGROUND AREA



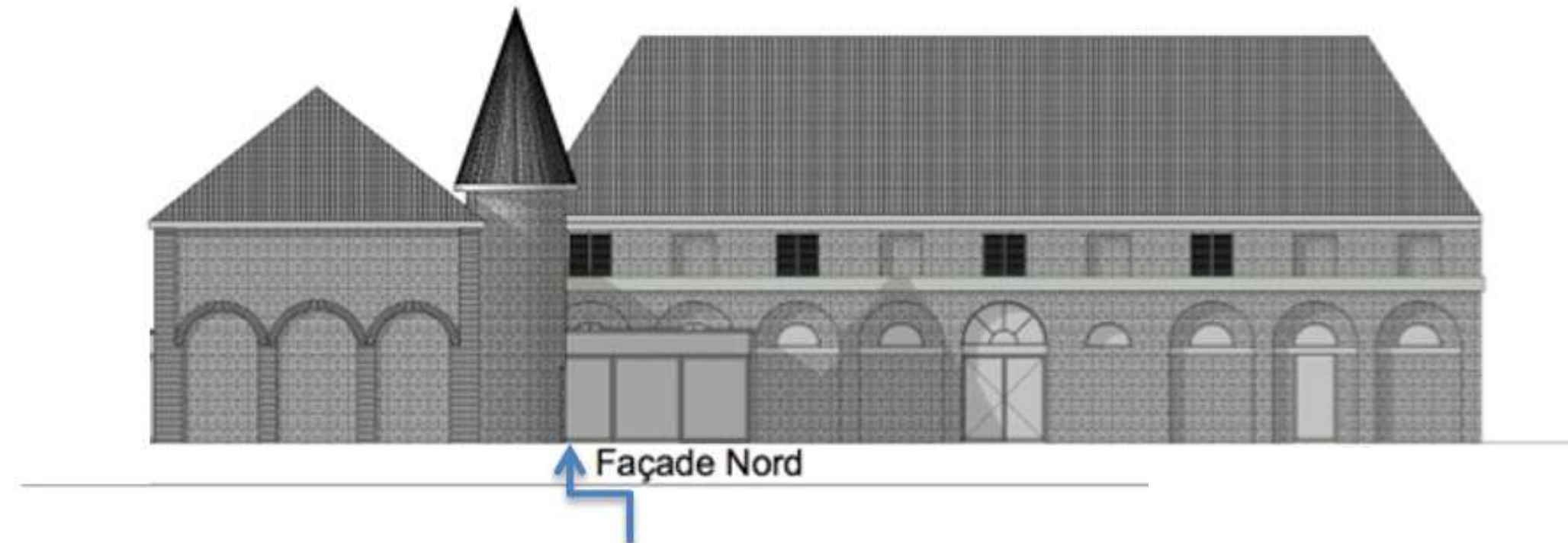
GARDENS



VIEW FROM THE MAIN ENTRANCE

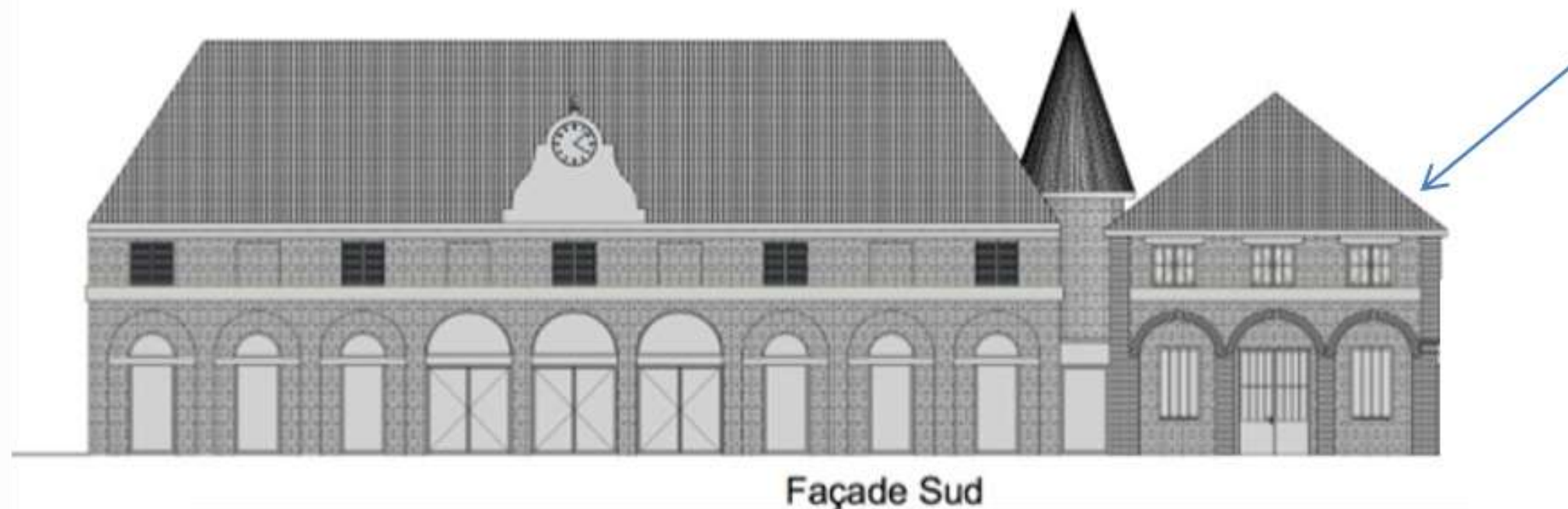


THE ORANGERY IS MADE OF 2 BUILDINGS



Lobby from Vendor parking side

Small Orangery : technical area
(caterer's kitchens, restrooms, cloakrooms)



Big Orangery : reception hall

(the building topped with a clock as seen from main Château side)

PROFESSIONAL KITCHENS IN THE ORANGERY



- Huge investments were made to create catering facilities which can serve 200+ guests at the same time
- High-end professional ovens, stoves, plancha, fryer and cooking utensils
- Cooling facilities: a special cooling room, several fridges and freezers with XL capacity
- Professional ice cube makers

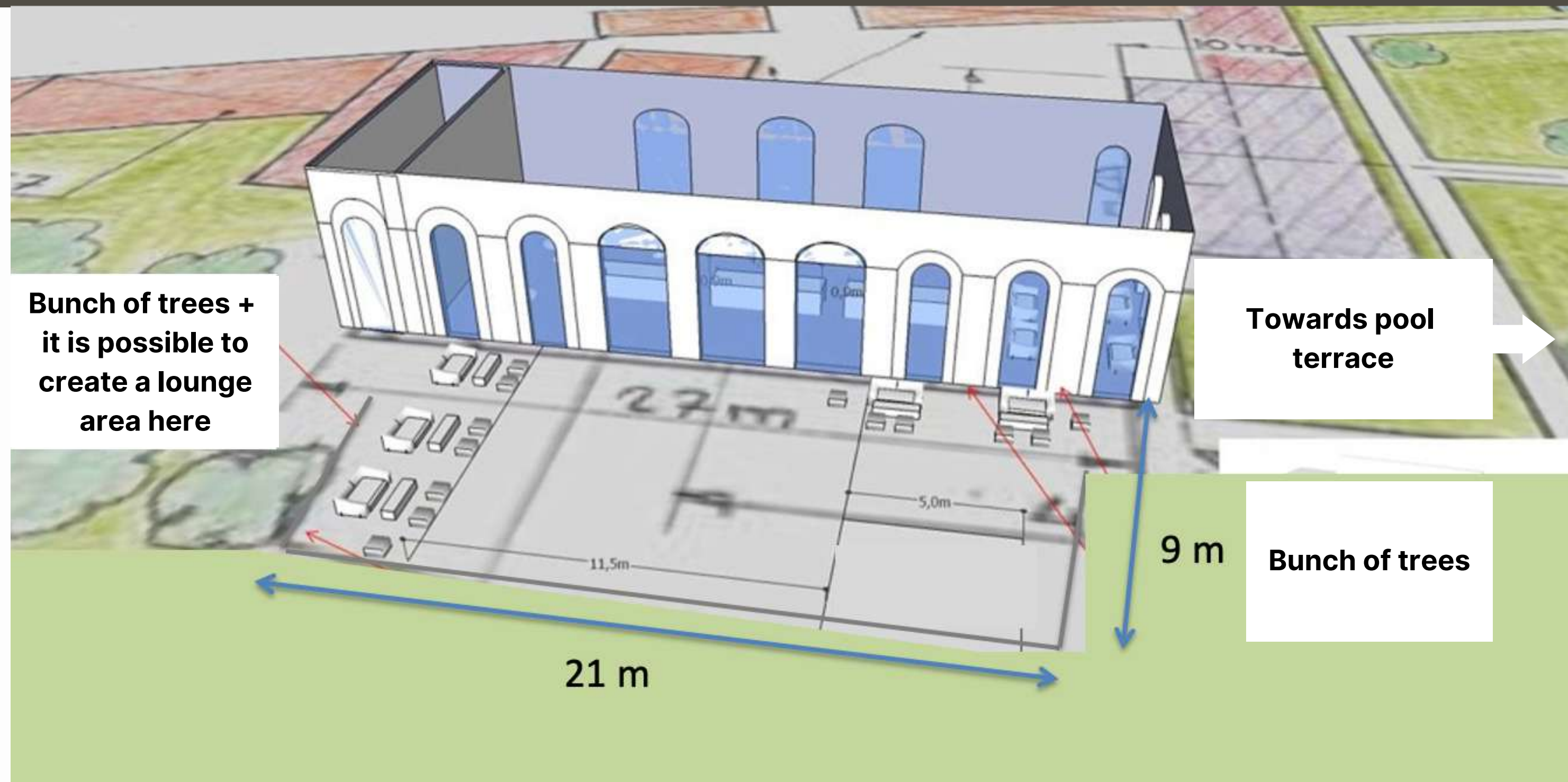


PROFESSIONAL KITCHENS IN THE ORANGERY



DIMENSIONS OF THE ORANGERY TERRACE

- Length : 27m along the building and 21m from one bunch of trees to the other
- Width : 9m



ORANGERY TERRACE



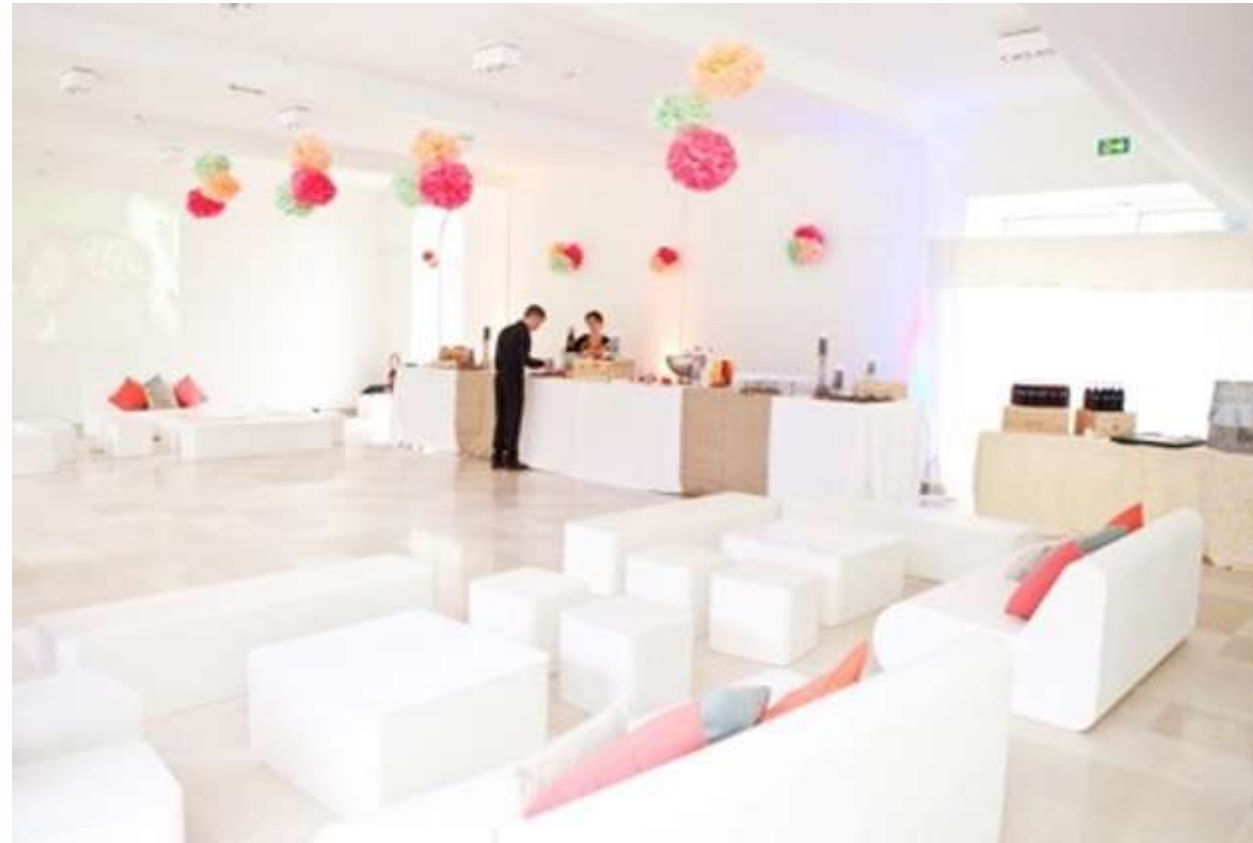
ORANGERY TERRACE BY NIGHT

Please note that the lighting on the Orangery terrace is different for every event and is managed by external companies.

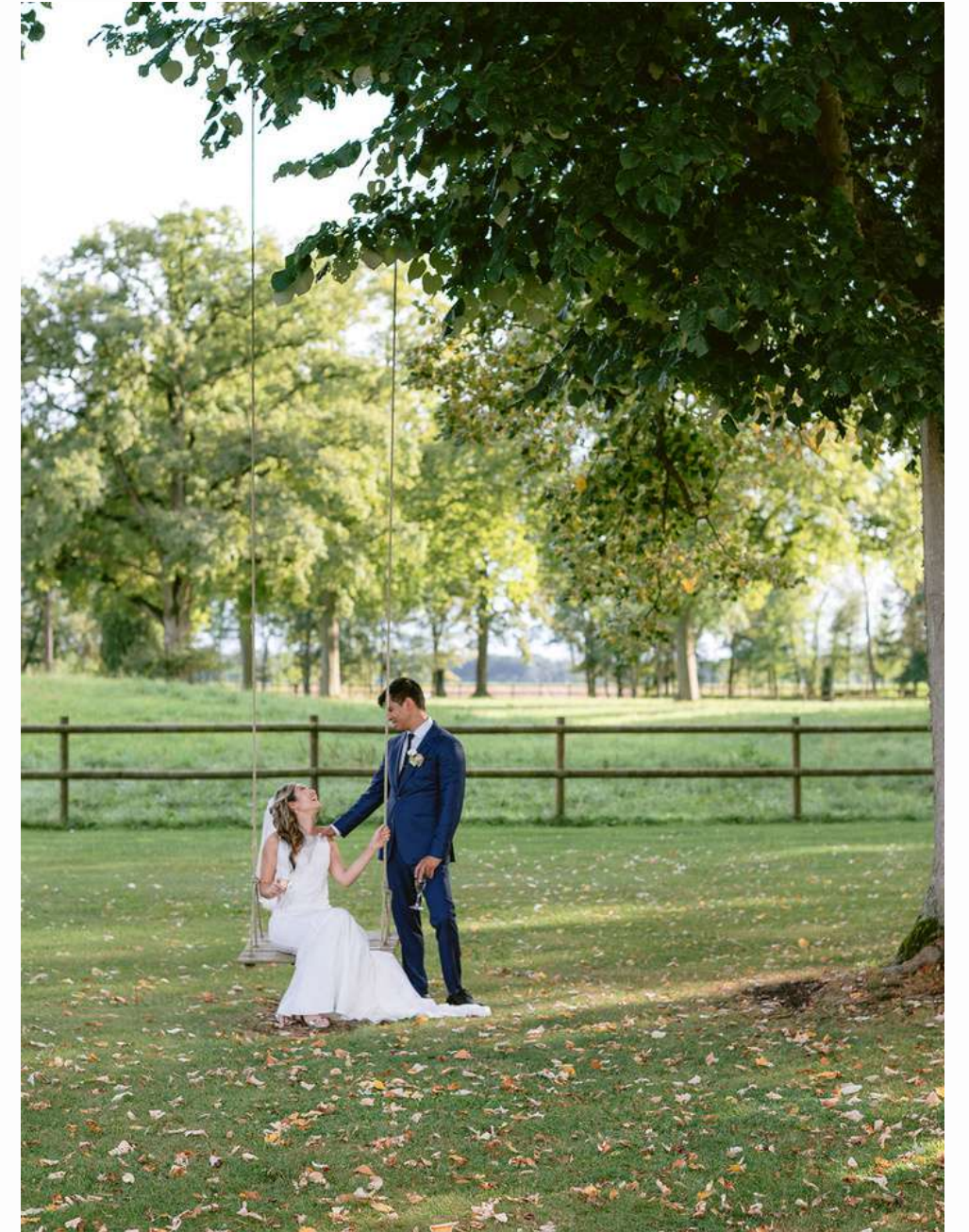
Your event coordinator will advise which lighting option is best suited to your event depending on your event design, budget and time of the year.



A VERSATILE SPACE IN THE ORANGERY



IDEAS FOR ORIGINAL PHOTO SHOOTS IN THE CHATEAU



IDEAS FOR ORIGINAL PHOTO SHOOTS NEAR THE CHATEAU

- Vineyards and river accross the street, sunflower or lavender fields, beautiful historic villages





CONTACT US

E-mail	Info@chateaudevarennnes.fr
Website	www.chateaudevarennnes.net
Address	2 rue de Bourgogne, 71270 Varennes sur le Doubs



THANK YOU, SEE YOU SOON

