

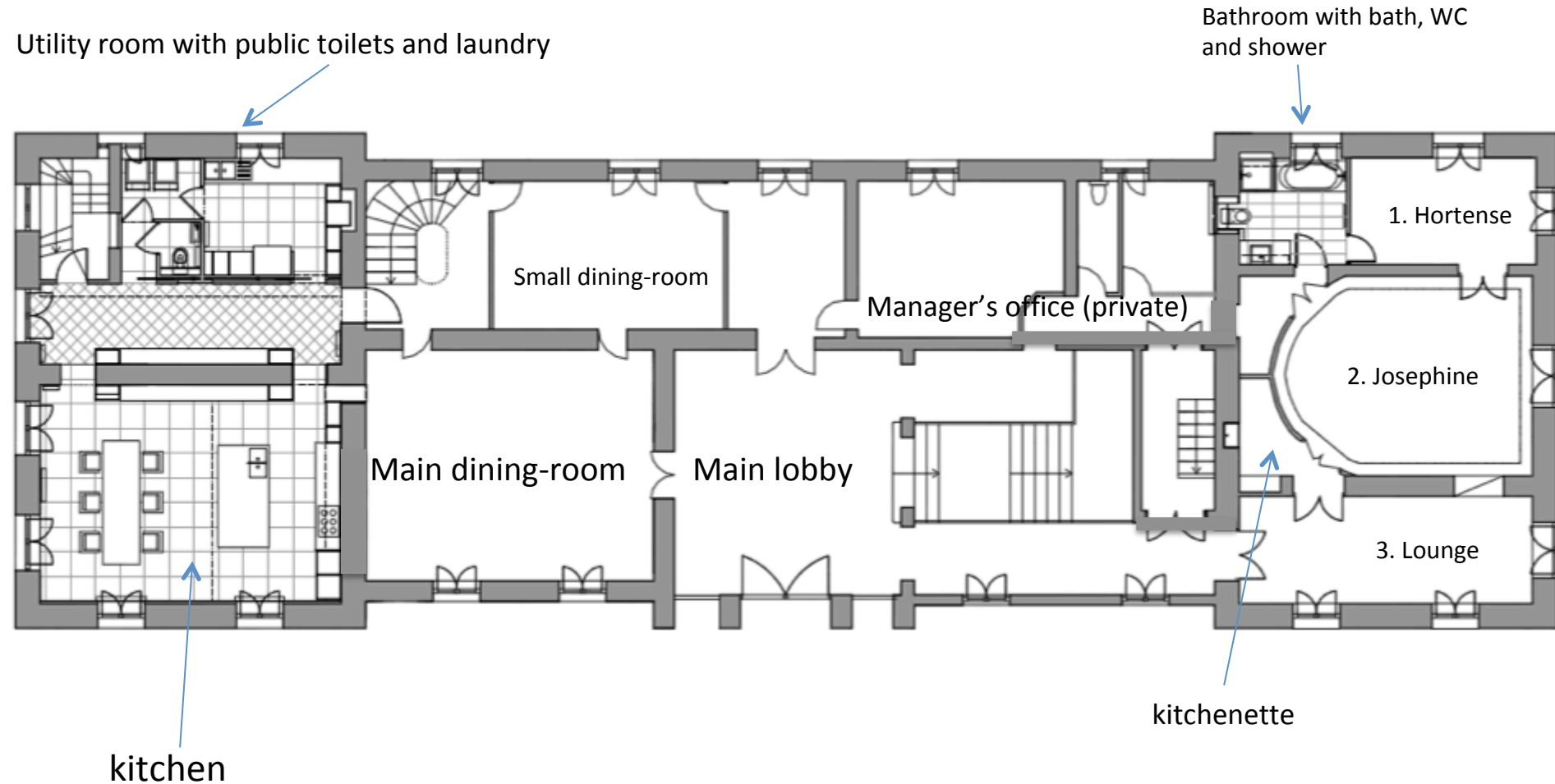


CHATEAU DE
VARENNES

FLOORPLANS

& BEDROOM DESCRIPTION

FLOOR PLANS : GROUND FLOOR



(please multiply all sqm figures by 10 to get sq ft)

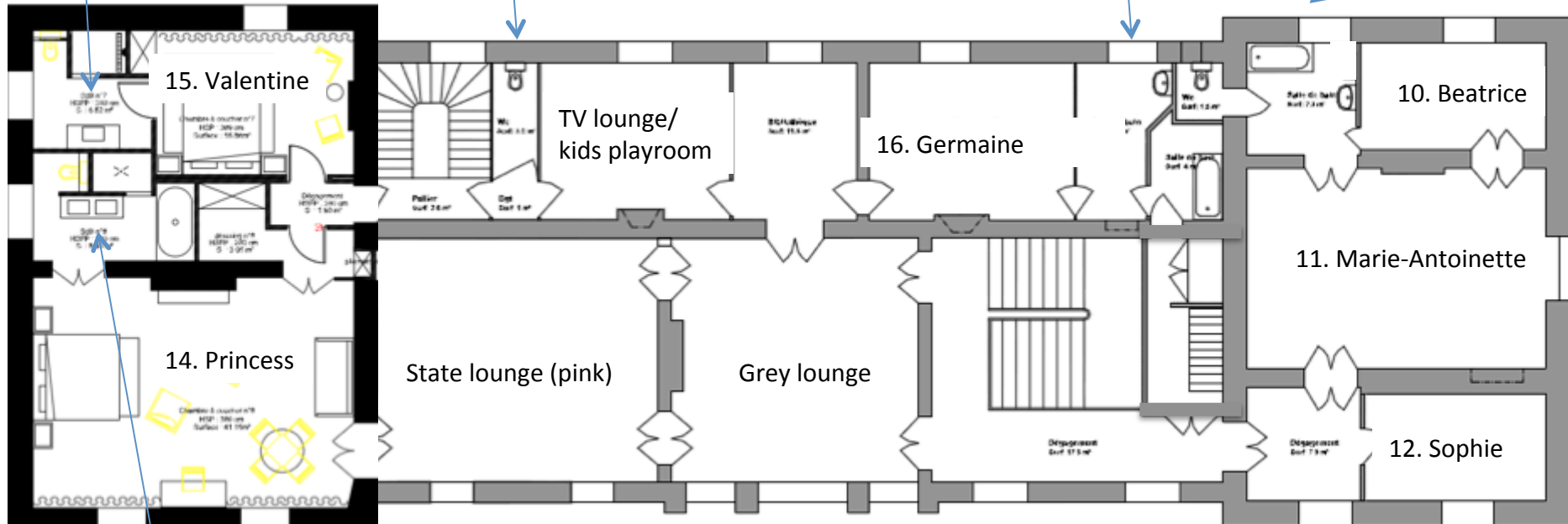
FLOOR PLANS : FIRST FLOOR

Bathroom with shower and WC

Public toilets

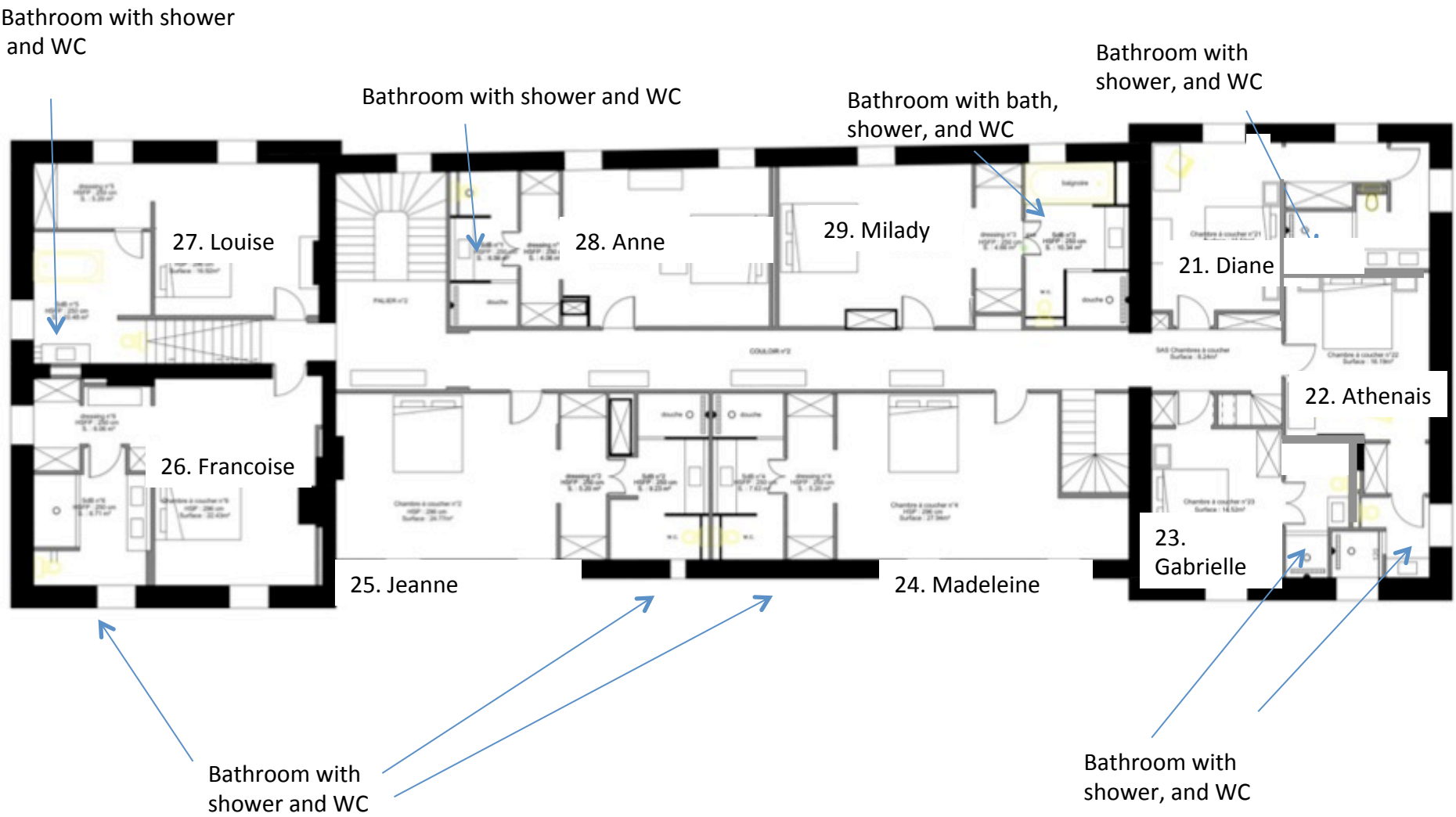
Bathroom with bath and WC

Bathroom with bath and WC



Bathroom with bath, shower and WC

FLOOR PLANS : TOP FLOOR

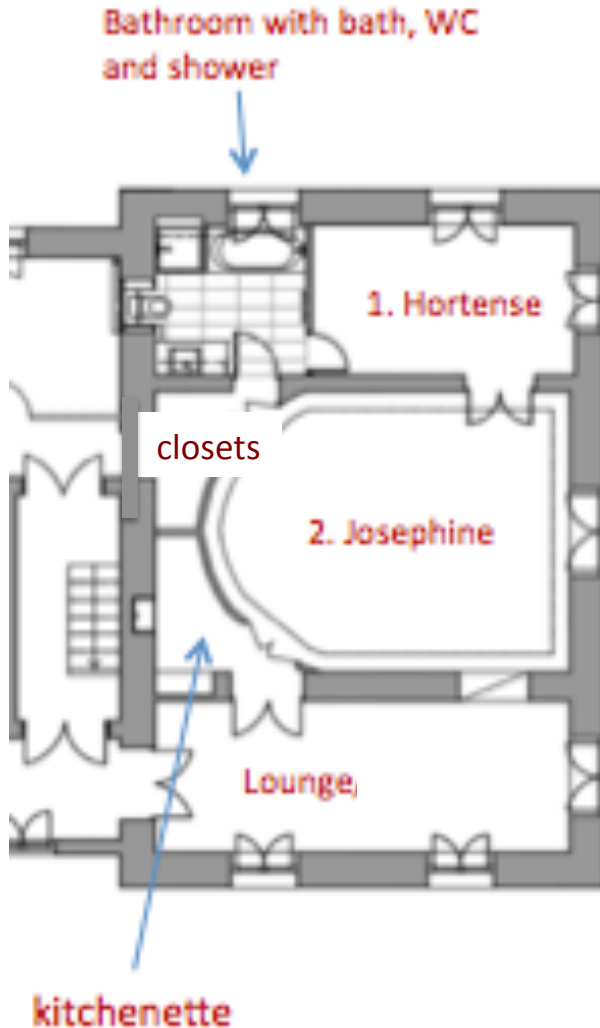


DETAILED DESCRIPTION

- The property was fully refurbished recently (everything is brand new : electricity, plumbers, heating, Internet access, beds, house linens)
- There are 20 bedrooms (9 master suites, 8 double bedrooms and 3 attached rooms) + 17 bathrooms
- 1, 2&3 : Josephine & Hortense (family suite/ 2 bedroom apartment on the ground floor)
- 10, 11&12 : Marie-Antoinette, Beatrice & Sophie (family suite = master + 2 double rooms on the first floor)
- 14: Princess (honeymoon suite on the first floor)
- 15: Valentine (Superior double room on the first floor)
- 16: Germaine (Classic double room on the first floor)
- 21 : Diane (Superior double room on the top floor)
- 22 : Athenais (Superior double room on the top floor)
- 23: Gabrielle (Classic double room on the top floor)
- 24-25-26-27-28-29 : six Deluxe suites on the top floor
- 101-102-103 : Superior double rooms in the outbuildings

(please multiply all sqm figures by 10 to get sq ft)

JOSEPHINE APARTMENT (# 1, 2, 3)



- Color : off-white except the bathroom which is grey
- Located on ground floor, South wing
- Direct access to the gardens and easy access for disabled people (no stairs)
- Full contained apartment (70 sqm)
 - Master bedroom with double bed
 - Small attached bedroom with single bed (Hortense)
 - Private lounge and small kitchenette with a sink
 - Separate closets
 - Family bathroom

(please multiply all sqm figures by 10 to get sq ft)

JOSEPHINE MASTER ROOM (2)



- King size bed: 180*200cm

(please multiply all sqm figures by 10 to get sq ft)

JOSEPHINE ATTACHED ROOMS (1 & 3)



(1) Single bed in Hortense (another bed can be added to make it a twin room)



(3) Private lounge

(please multiply all sqm figures by 10 to get sq ft)

JOSEPHINE BATHROOM

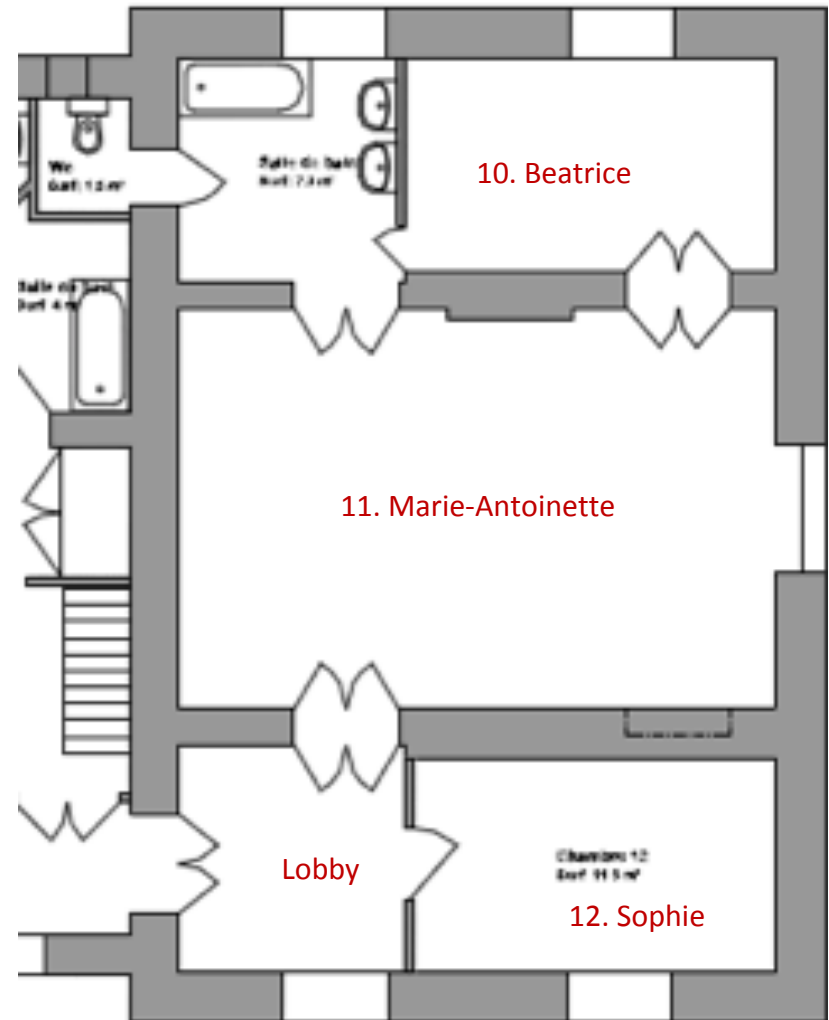


- Family bathroom with bath, shower, wc, wash-basin

(please multiply all sqm figures by 10 to get sq ft)

MARIE-ANTOINETTE SUITE (10, 11, 12)

- Located on first floor (South wing)
- Balcony over the park
- Total size of the suite: 73 sqm
- Master bedroom (35 sqm)
- Private lobby with bespoke closets (8 sqm)
- All fabrics, paintings and wallpapers come from famous British designer brands Osborne & Little and Farrow&Ball



(please multiply all sqm figures by 10 to get sq ft)

MARIE-ANTOINETTE : MASTER BEDROOM (11)



- Custom made house furnishings by Osborne & Little
- King size bed (180x200cm)

(please multiply all sqm figures by 10 to get sq ft)

MARIE-ANTOINETTE SUITE : ATTACHED BEDROOM 10 (BEATRICE)



- Attached bedroom: Beatrice (12 sqm with double bed: 140*200cm) and bespoke closets
- Custom made house furnishings by Osborne & Little

(please multiply all sqm figures by 10 to get sq ft)

MARIE-ANTOINETTE SUITE : ATTACHED BEDROOM 12 (SOPHIE)



- Attached bedroom: Sophie (12 sqm with double bed: 140*200cm and bespoke closets)
- Custom made house furnishings by Osborne & Little
- Can share bathroom with Marie-Antoinette or with Germaine

(please multiply all sqm figures by 10 to get sq ft)

MARIE-ANTOINETTE BATHROOM 11



- Family bathroom with bath, shower, wc, wash-basin and dressing table

(please multiply all sqm figures by 10 to get sq ft)

PRINCESS – HONEYMOON SUITE (14)



- Located on first floor (pool side)
- All white with a touch of gold (custom-made home furnishings by Dedar)
- Total size: 53 sqm and 4 meter high ceiling
- Master bedroom (41 sqm) with Emperor size bed (200*200cm)

(please multiply all sqm figures by 10 to get sq ft)

PRINCESS BATHROOM 14



- Luxury bathroom with marbles and gold mosaic tiles
- All white with a touch of gold
- Bath-tube, walk-in shower, wc, double wash-basin

(please multiply all sqm figures by 10 to get sq ft)

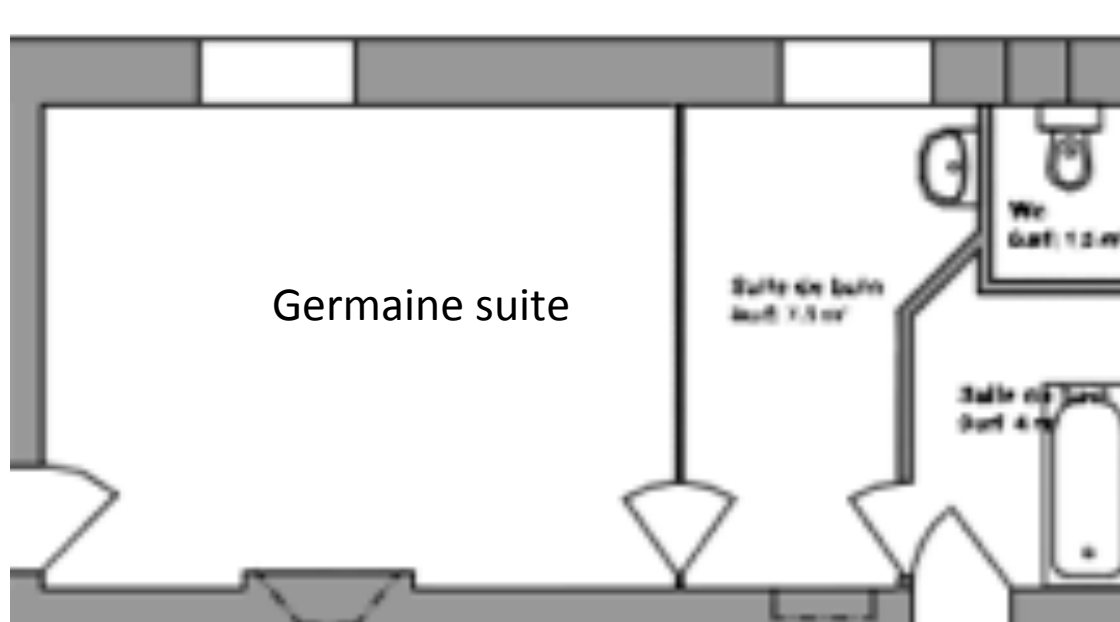
VALENTINE (SUPERIOR DOUBLE ROOM 15)



- Ground floor
- Refurbished in 2012
- Total size: 25 sqm. Colors are white and silver
- Master bedroom (18.5 sqm) with bespoke walk-in closet
 - ✓ King size bed (180*200cm) can be split in twin beds
 - ✓ Ensuite marble bathroom (6.5 sqm) with bath, walk-in shower, wc, wash-basin

(please multiply all sqm figures by 10 to get sq ft)

GERMAINE (CLASSIC DOUBLE ROOM 16)



- Located on first floor (central building)
- Total size of 27 sqm
- Double bedroom (19 sqm with queen bed: 160*200cm)

(please multiply all sqm figures by 10 to get sq ft)

GERMAINE (SUPERIOR DOUBLE ROOM 16)



(please multiply all sqm figures by 10 to get sq ft)

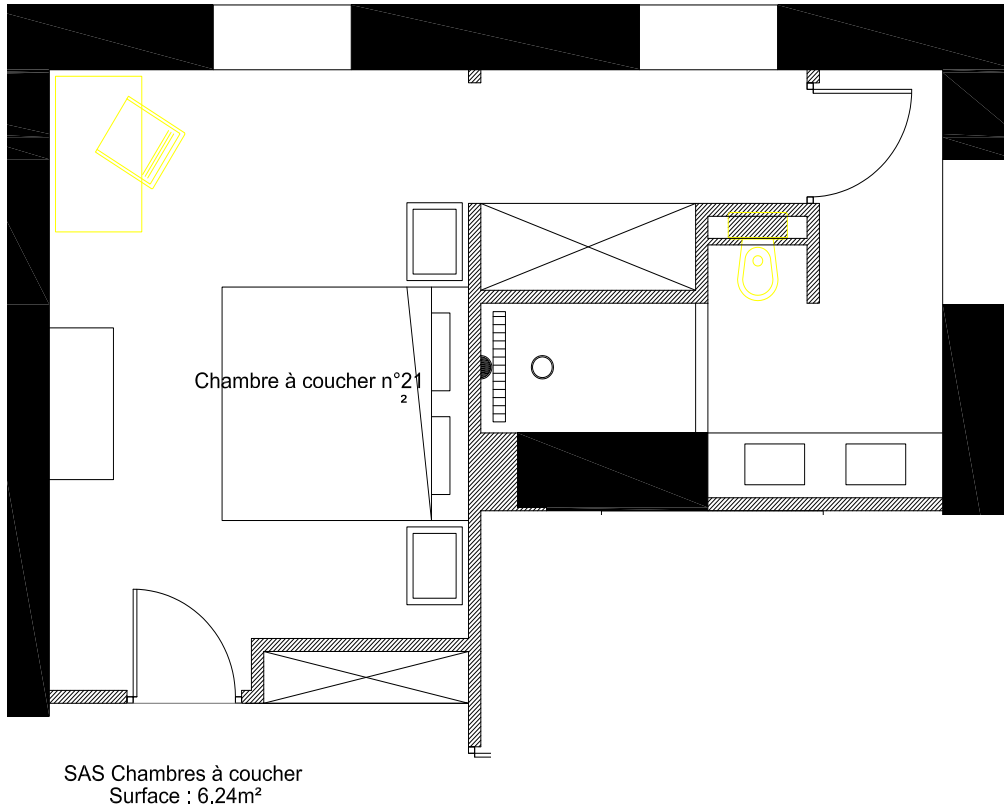
GERMAINE BATHROOM 16



- En-suite bathroom with bath-tube, wc, wash-basin and dressing-table

(please multiply all sqm figures by 10 to get sq ft)

DIANE (SUPERIOR DOUBLE ROOM 21)



- King size bed : double (180x200cm) or twin beds (2x90x200cm)
- Ensuite bathroom with shower, basin and WC
- Total size of 27 sqm

(please multiply all sqm figures by 10 to get sq ft)

DIANE (SUPERIOR DOUBLE ROOM - NUMBER 21)



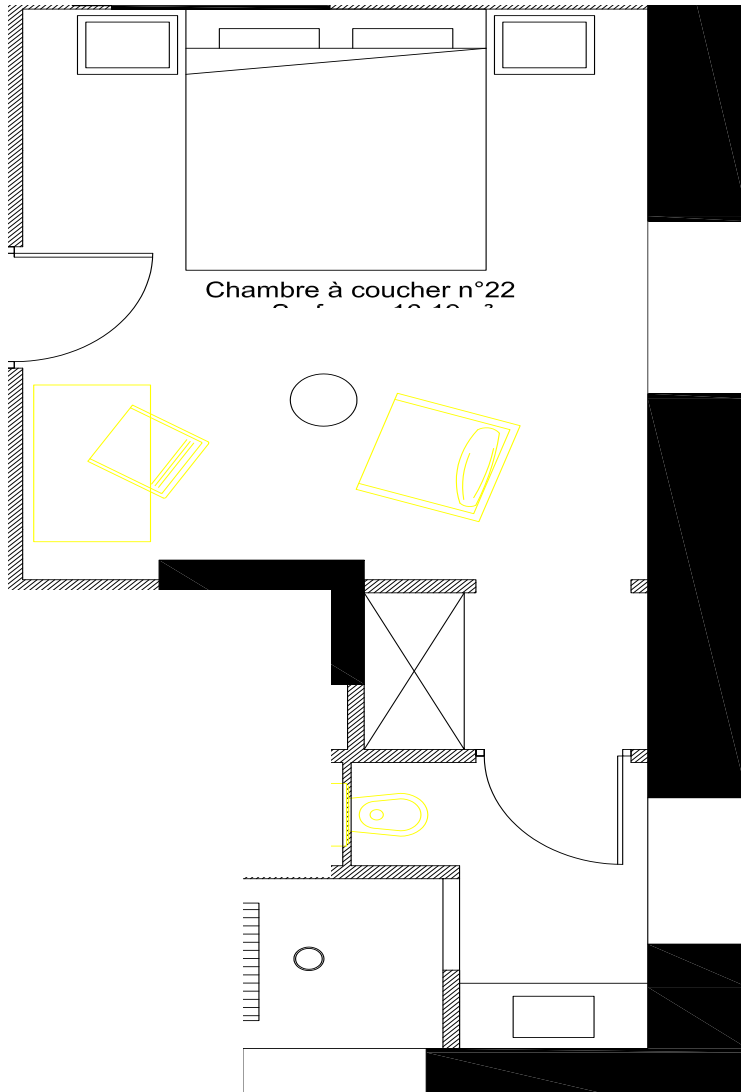
(please multiply all sqm figures by 10 to get sq ft)

DIANE (BATHROOM 21)



(please multiply all sqm figures by 10 to get sq ft)

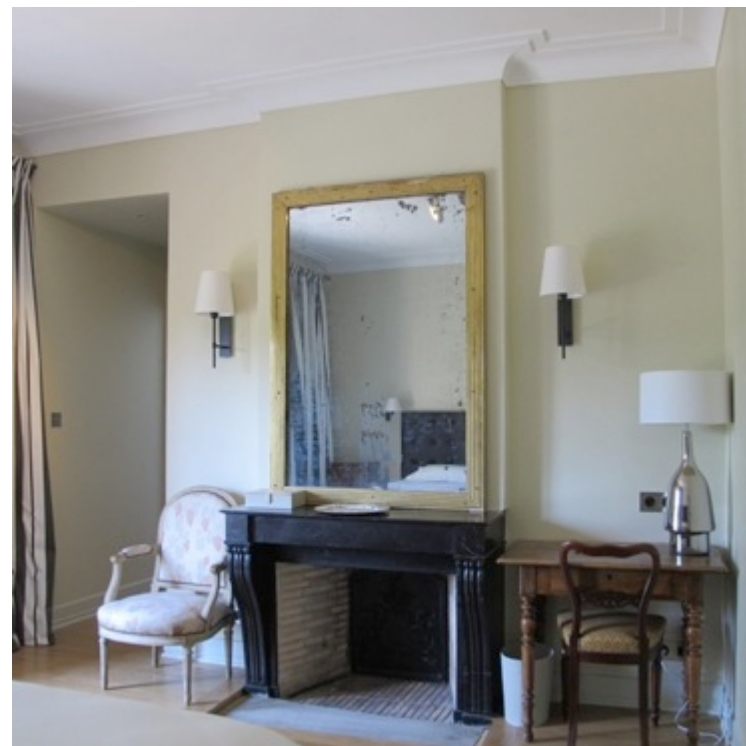
ATHENAIS (SUPERIOR DOUBLE ROOM 22)



- Located on top floor (South wing) with a balcony overlooking the park
- King size bed (180*200cm)
- Ensuite bathroom with shower, WC, wash-basin
- Total size of 26 sqm

(please multiply all sqm figures by 10 to get sq ft)

ATHENAIIS (SUPERIOR DOUBLE ROOM 22)



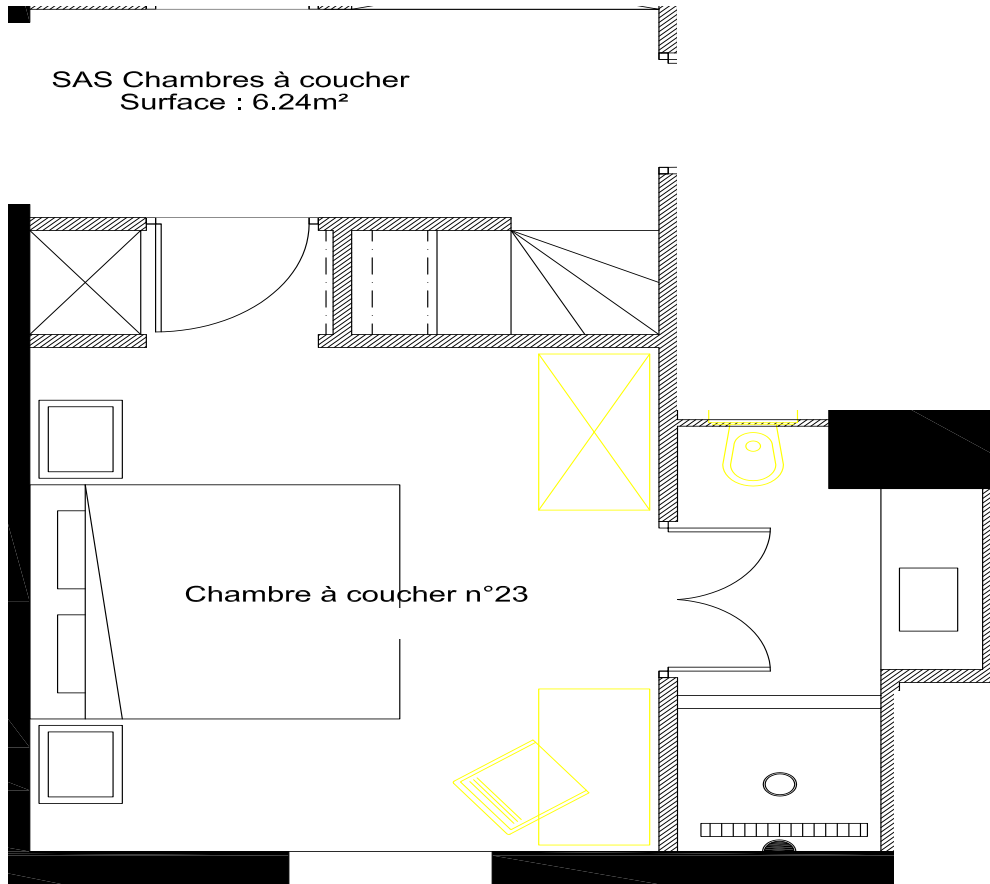
(please multiply all sqm figures by 10 to get sq ft)

ATHENAIIS (BATHROOM 22)



(please multiply all sqm figures by 10 to get sq ft)

GABRIELLE (CLASSIC DOUBLE ROOM - NUMBER 23)



- Located on top floor (South wing)
- King size bed (180*200cm)
- Ensuite bathroom with shower, WC, wash-basin
- Total size of 24 sqm

(please multiply all sqm figures by 10 to get sq ft)

GABRIELLE (SUPERIOR DOUBLE ROOM - 23)



(please multiply all sqm figures by 10 to get sq ft)

GABRIELLE (BATHROOM 23)



(please multiply all sqm figures by 10 to get sq ft)

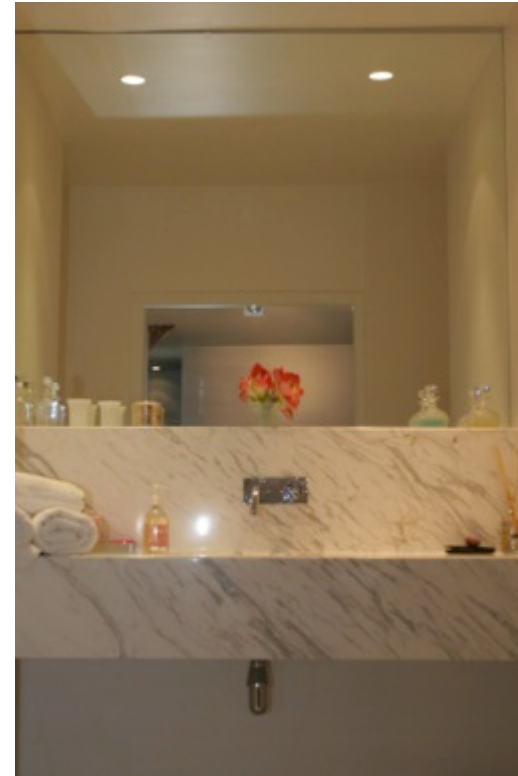
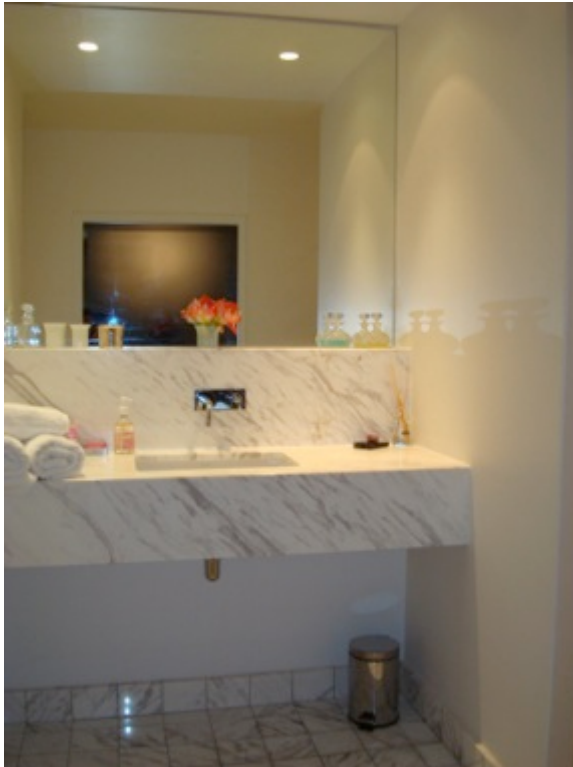
MADELEINE (DELUXE SUITE 24)



- Total size: 40 sqm
- Master bedroom (33 sqm) with two bespoke walk-in closets
- Emperor size bed (200*200 cm) which can be transformed in twin beds (2*100*200 cm)

(please multiply all sqm figures by 10 to get sq ft)

MADELEINE (BATHROOM 24)



- Beautiful ensuite bathroom with walk-in shower, wc, wash-basin
- White marble floors and tops from Carrara in Italy

(please multiply all sqm figures by 10 to get sq ft)

JEANNE (DELUXE SUITE 25)



- Located on second floor (central building, facing West side)
- Total size: 40 sqm
- Master bedroom (30 sqm) with two bespoke walk-in closets
- Emperor size bed (200*200 cm) which can be transformed in twin beds (2*100*200 cm)

(please multiply all sqm figures by 10 to get sq ft)

JEANNE (BATHROOM 25)



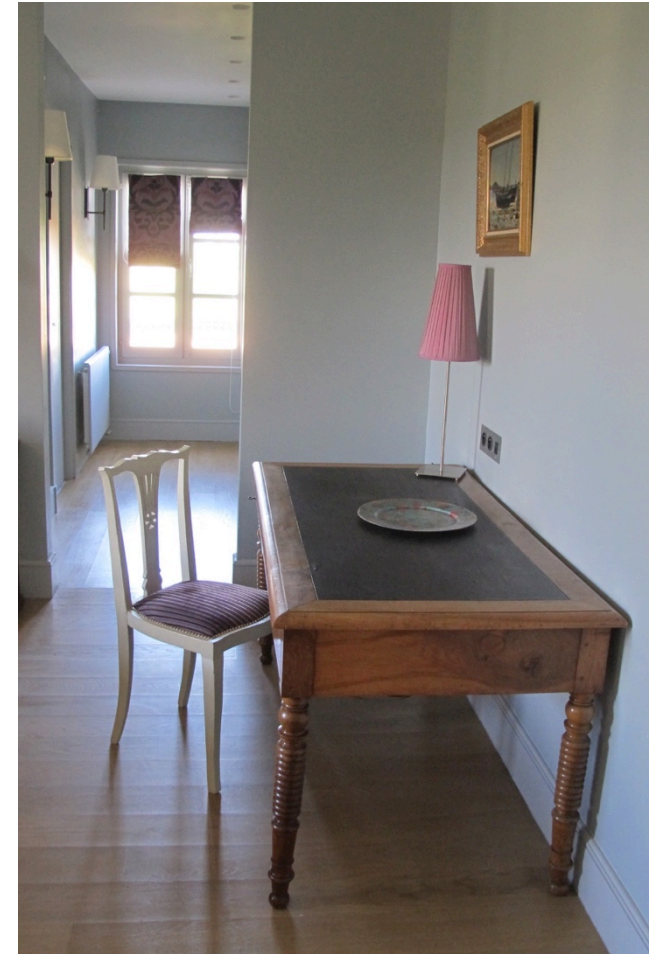
- Large ensuite bathroom with walk-in shower, wc, wash-basin
- Yellow marble floors and tops

(please multiply all sqm figures by 10 to get sq ft)

FRANCOISE (DELUXE SUITE 26)



- Located on second floor (pool/garden side). Total size: 38 sqm
- Large double or Family suite (33 sqm) with bespoke walk-in closet
 - ✓ Emperor size bed (200*200cm) can be split into twins
 - ✓ White marble XL bathroom



(please multiply all sqm figures by 10 to get sq ft)

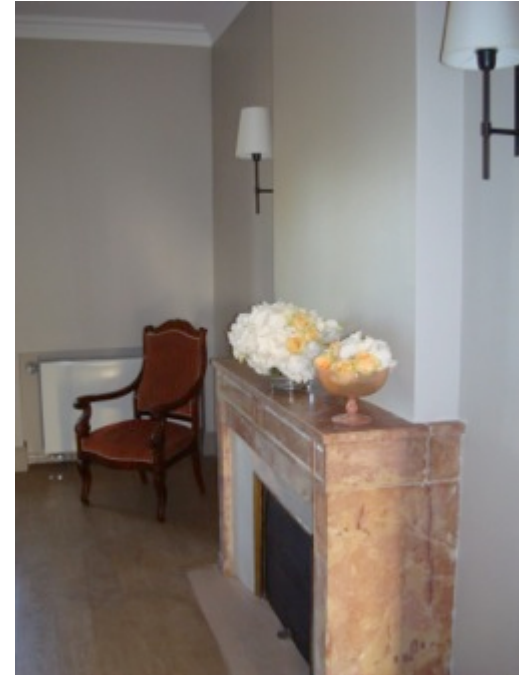
FRANCOISE (BATHROOM 26)



- Very large ensuite bathroom with marble, XL walk-in shower, wc, 2 wash-basins

(please multiply all sqm figures by 10 to get sq ft)

LOUISE (DELUXE SUITE 27)



- Located on second floor (pool/garden side). Total size: 32 sqm
- Master bedroom (24 sqm) with bespoke walk-in closet and attached study room
 - ✓ King size bed (180*200cm) can be split into twins
 - ✓ Ensuite bathroom with grey marbles

(please multiply all sqm figures by 10 to get sq ft)

LOUISE (BATHROOM 27)



- Ensuite bathroom with grey marbles, walk-in shower, wc, wash-basin

(please multiply all sqm figures by 10 to get sq ft)

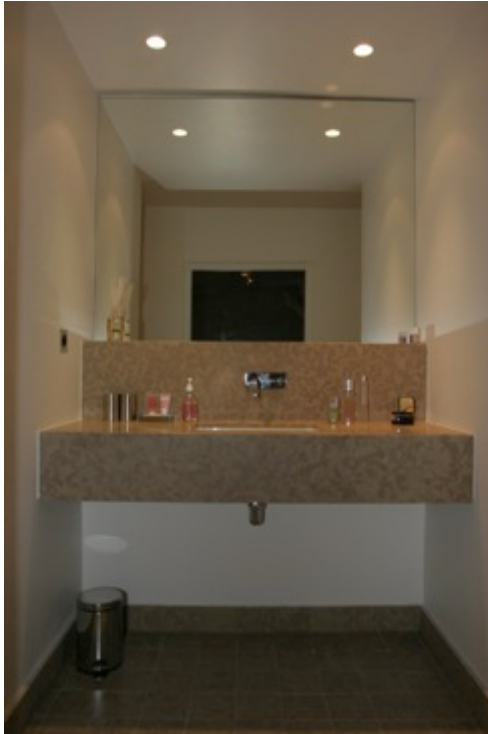
ANNE (DELUXE SUITE 28)



- Total size: 32 sqm
- Master bedroom (25 sqm) with two bespoke walk-in closets
- Emperor size bed (200*200 cm) which can be transformed in twin beds (2*100*200 cm)

(please multiply all sqm figures by 10 to get sq ft)

ANNE (BATHROOM 28)



- Ensuite bathroom (7 sqm) with walk-in shower, wc, wash-basin
- Beige marble floors

(please multiply all sqm figures by 10 to get sq ft)

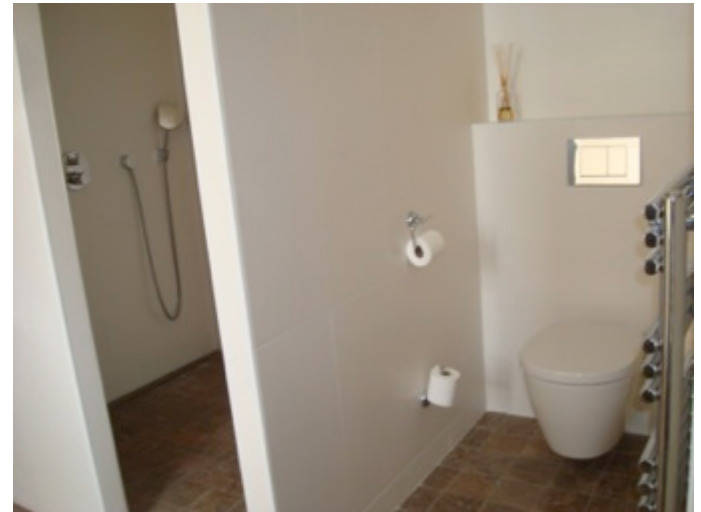
MILADY (DELUXE SUITE 29)



- Located on second floor (central building, facing East side). Total size: 35 sqm
- Master bedroom (25 sqm) with two bespoke walk-in closets
- Emperor bed (200*200 cm) which can be transformed in twin beds (2*100*200 cm)

(please multiply all sqm figures by 10 to get sq ft)

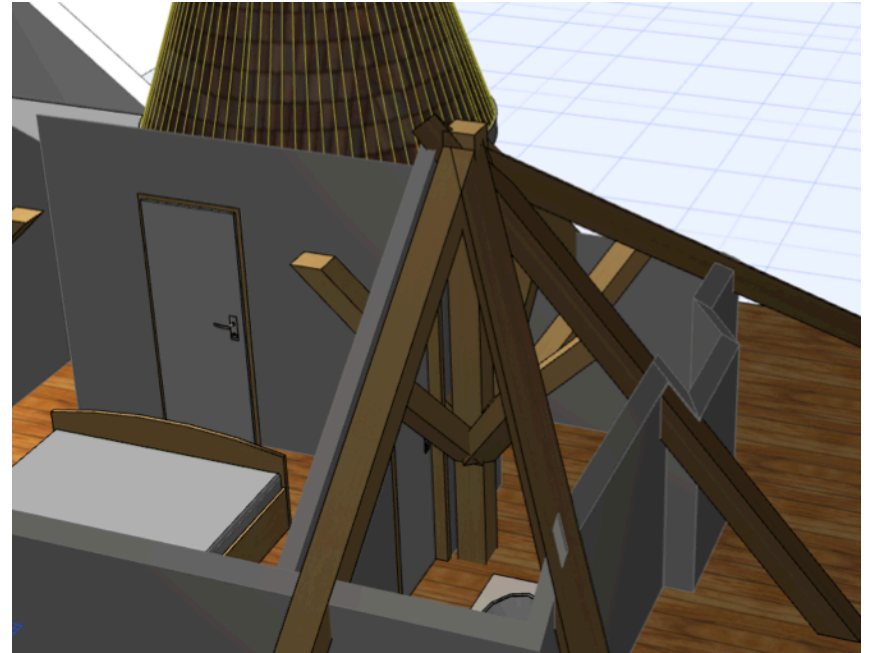
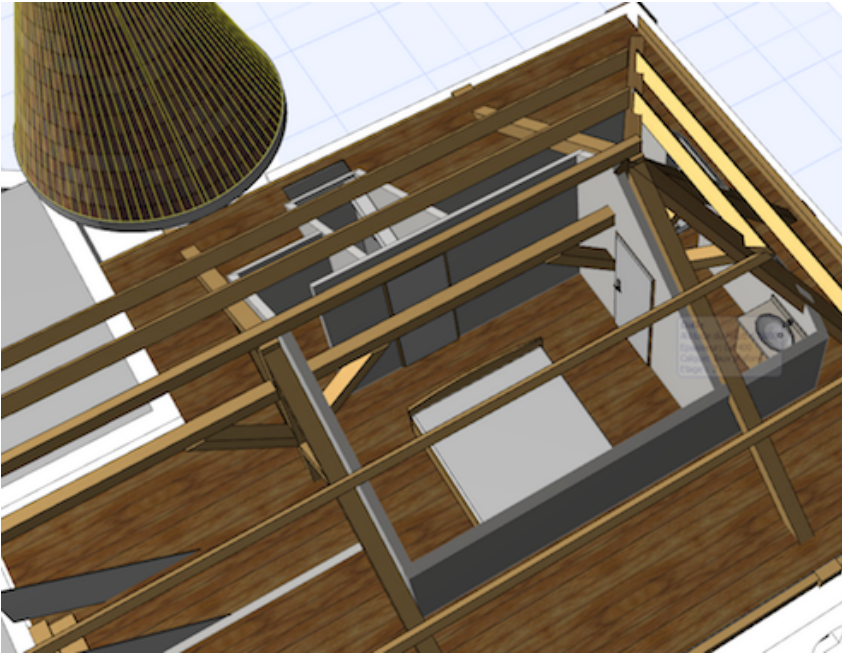
MILADY (BATHROOM 29)



- Ensuite bathroom (10 sqm) with bath-tube (for kids), extra-large walk-in shower, wc, wash-basin
- Dark brown marble floors

(please multiply all sqm figures by 10 to get sq ft)

EXTRA-ROOMS IN THE OUTBUILDINGS



See other file

(please multiply all sqm figures by 10 to get sq ft)



CHATEAU DE
VARENNES

WWW.CHATEAUDEVARENNES.NET