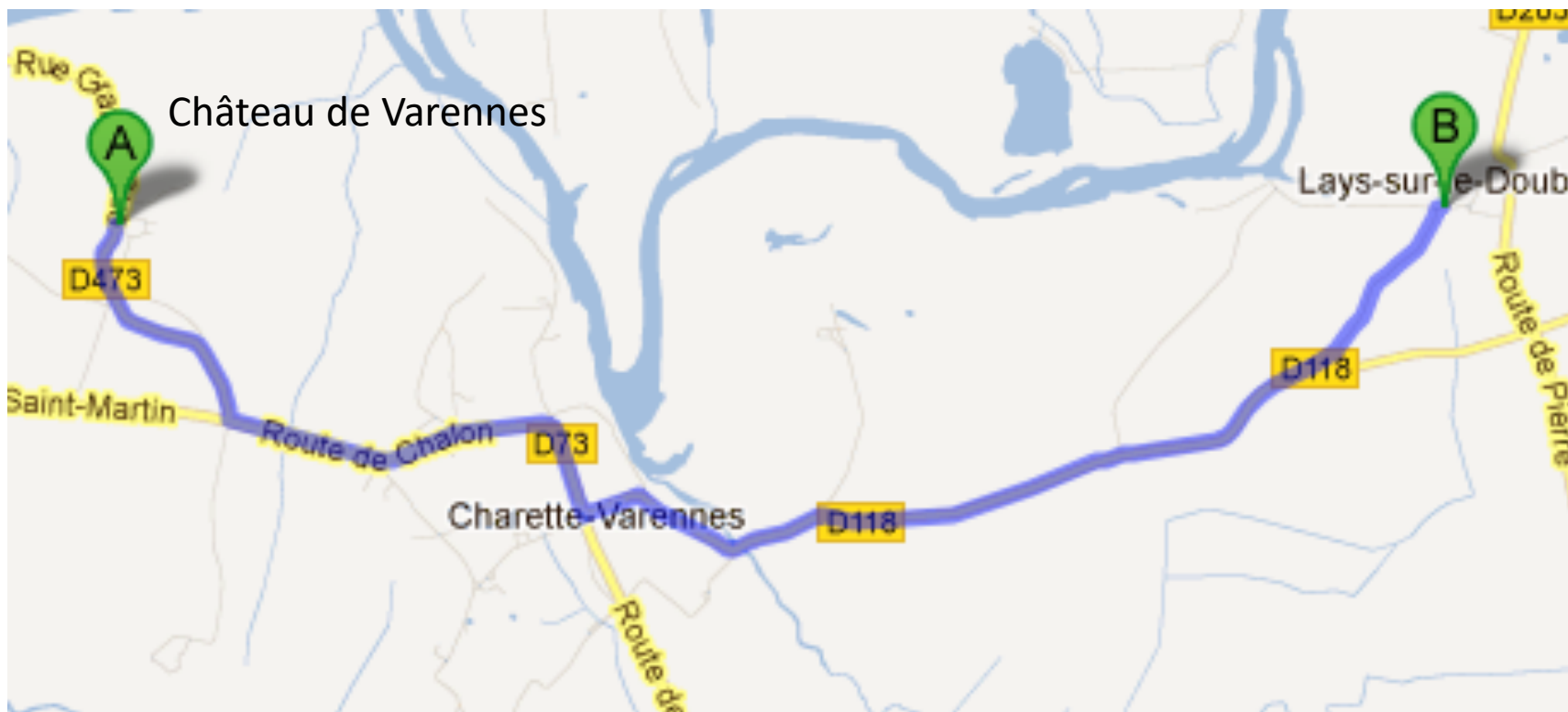




Château de Lays  
[www.chateaudelays.com](http://www.chateaudelays.com)

# LOCATION

- The Château de Lays is located 5km from Varennes (5mn drive). The property is owned by the same family who purchased the land 400 years ago.
- The bedrooms and bathrooms were refurbished recently.



Château de Lays

[www.chateaudelays.com](http://www.chateaudelays.com)

# SHORT SUMMARY

- The chateau de Lays is a family historical home and not generally open to public
- It is a Bed & Breakfast available from May to end of September
  
- The Château is featuring big living areas, 9 bedrooms and 6 bathrooms
  - ✓ 2 suites with king size beds
  - ✓ 4 double bedrooms with queen beds
  - ✓ 2 twin bedrooms
  
- **Other facilities include**
  - ✓ A big swimming pool (12\*5 m) and a pool-house with cloakroom
  - ✓ A beautiful garden with a tennis court
  
- **Booking modalities**
  - ✓ To secure booking for your guest, you will be requested to pay a deposit
  - ✓ Reservation and paiement can be done directly through the website
  - ✓ Rates includes breakfast



# AERIAL VIEW OF THE PROPERTY



# VIEW FROM THE MAIN ENTRANCE



Château de Lays

[www.chateaudelays.com](http://www.chateaudelays.com)



# VIEW FROM THE GARDEN





# VIEW FROM THE GARDEN





# TENNIS COURT & SWIMMING-POOL



Château de Lays

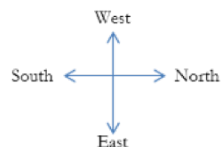
[www.chateaudelays.com](http://www.chateaudelays.com)



# TENNIS COURT & SWIMMING-POOL



# FLOOR PLANS : GROUND FLOOR



Garden

Tennis court

Pool

Terrace = access to garden

Private

Private

Lounge

Dining room

Utility room

Kitchen

Private

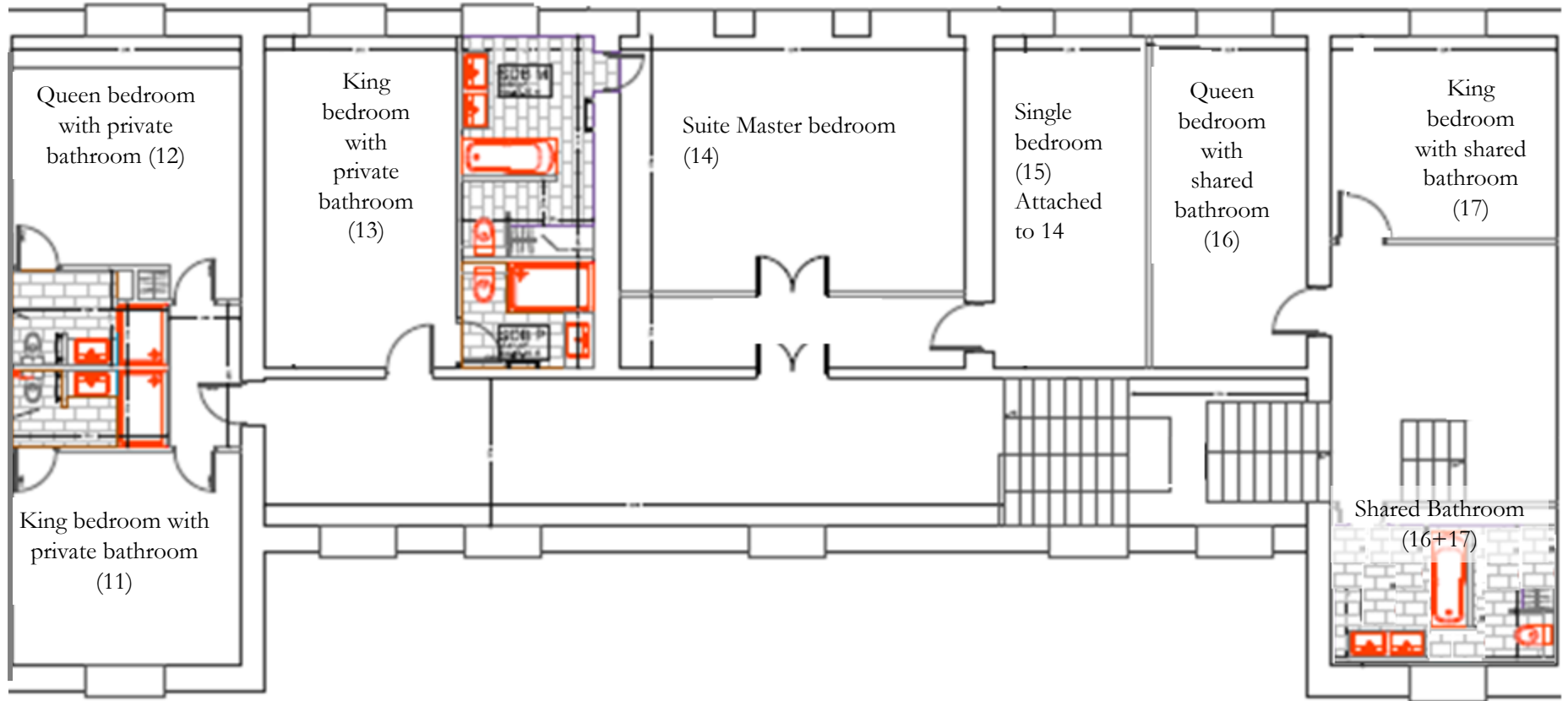
Main lobby

Access to  
kitchen

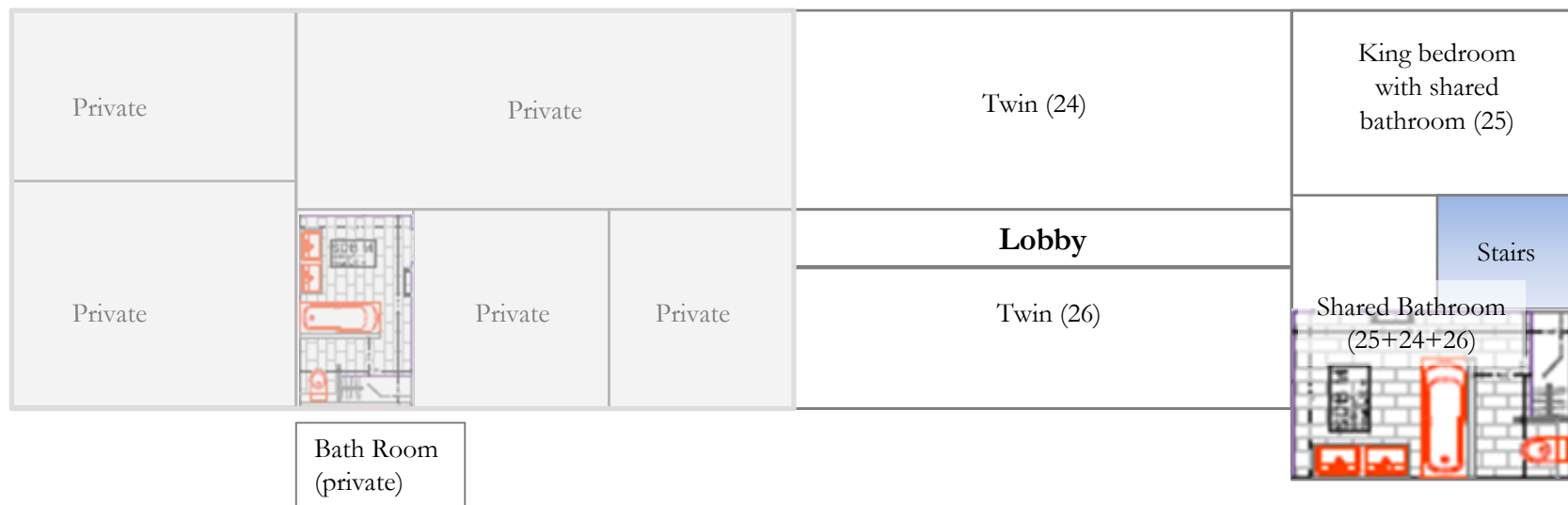
Main entrance



# FLOOR PLANS : FIRST FLOOR



# FLOOR PLANS : SECOND FLOOR





# HELENE ROOM

Room11



King size bed room with its private bathroom  
Rate per night 140€ (incl VTA)

# SUZANNE ROOM

Room12



Quenn size bed room with its private bathroom  
Rate per night 140€ (incl VTA)



# GERARD ROOM

Room13



King size bed room with its private bathroom  
Rate per night 160€ (incl VTA)

# MATHILDE SUITE

## Room14



King size bed in the first master room of the suite

The bathroom is in direct access.

Rate per night 250€ (incl VTA) for the 2 rooms

Château de Lays

[www.chateaudelays.com](http://www.chateaudelays.com)



# MATHILDE SUITE

Room15



2 single beds in the room aside.  
Private corridor to access the master bedroom and the bathroom

# FRANCOIS SUITE

Rooms17



Rooms16



2 independant rooms with King size beds with a shared  
bathroom located in front of the rooms  
Rate per night 260€ (incl VTA)

# BENOIT ROOM

Room25



King size bed room with a shared bathroom in front of the room  
Picture room is not accurate as the room is being entirely reworked  
Rate per night 130€ (incl VTA)



# SAMUEL ROOM

Room24



2 single beds with a shared bathroom at the end of the corridor  
Rate per night 90€ (incl VTA)

# CATHERINE ROOM

Room26



2 single beds with a shared bathroom at the end of the corridor  
Rate per night 90€ (incl VTA)