



CHATEAU DE
VARENNES

**NEW ROOMS IN THE
OUTBUILDINGS**

SHORT DESCRIPTION OF ROOMS

3 classic suites #101, 102 and 103

- King size bed (can be set up double or twin)
- En-suite bathroom (shower, basin, WC)
- Curtains, cushions etc are custom-made with fabric by the luxury brand Hermes Paris
- Complimentary Nespresso and tea in each Suite
- Individual air conditioning and heating
- Wifi

Room 104 is not rented (used to accommodate the housekeeper)

THE NEW ROOMS ARE LOCATED IN THE OUTBUILDINGS BEHIND THE ORANGERY

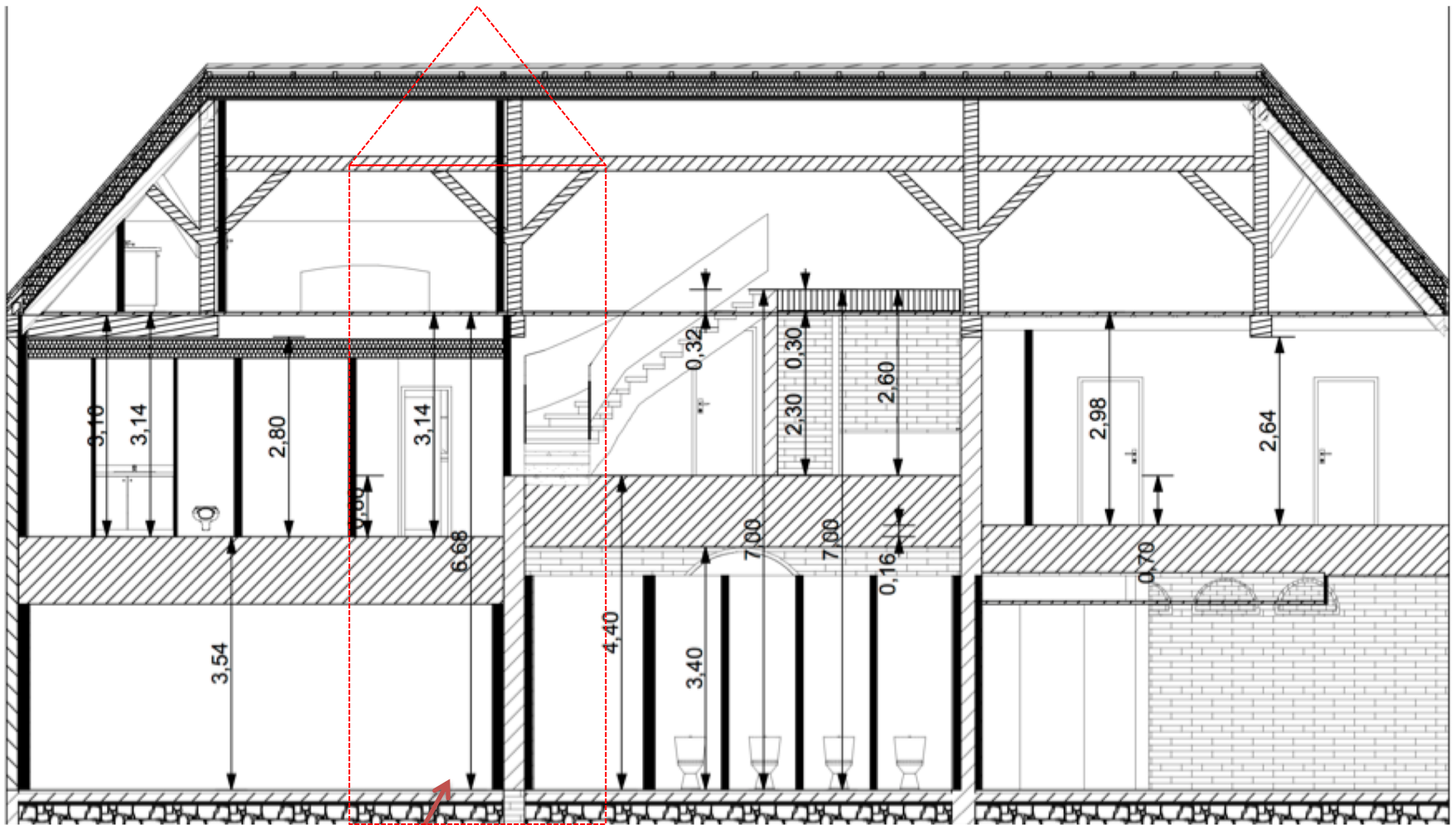


New rooms in the
outbuildings

**THE ENTRANCE IS FROM THE COURTYARD
(STAIRCASE IN LEFT TOWER)**

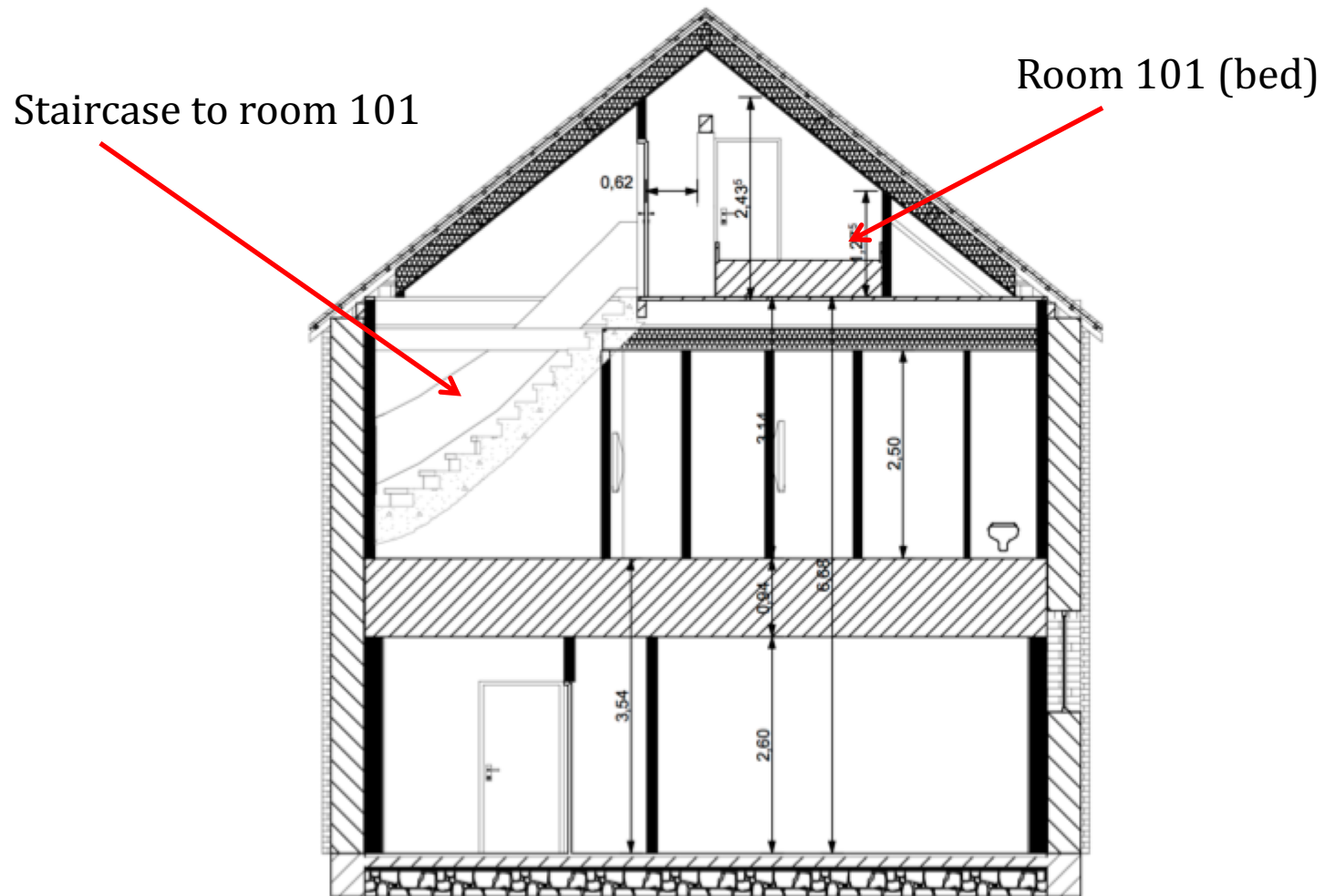


CROSS-SECTION VIEW FROM COURTYARD

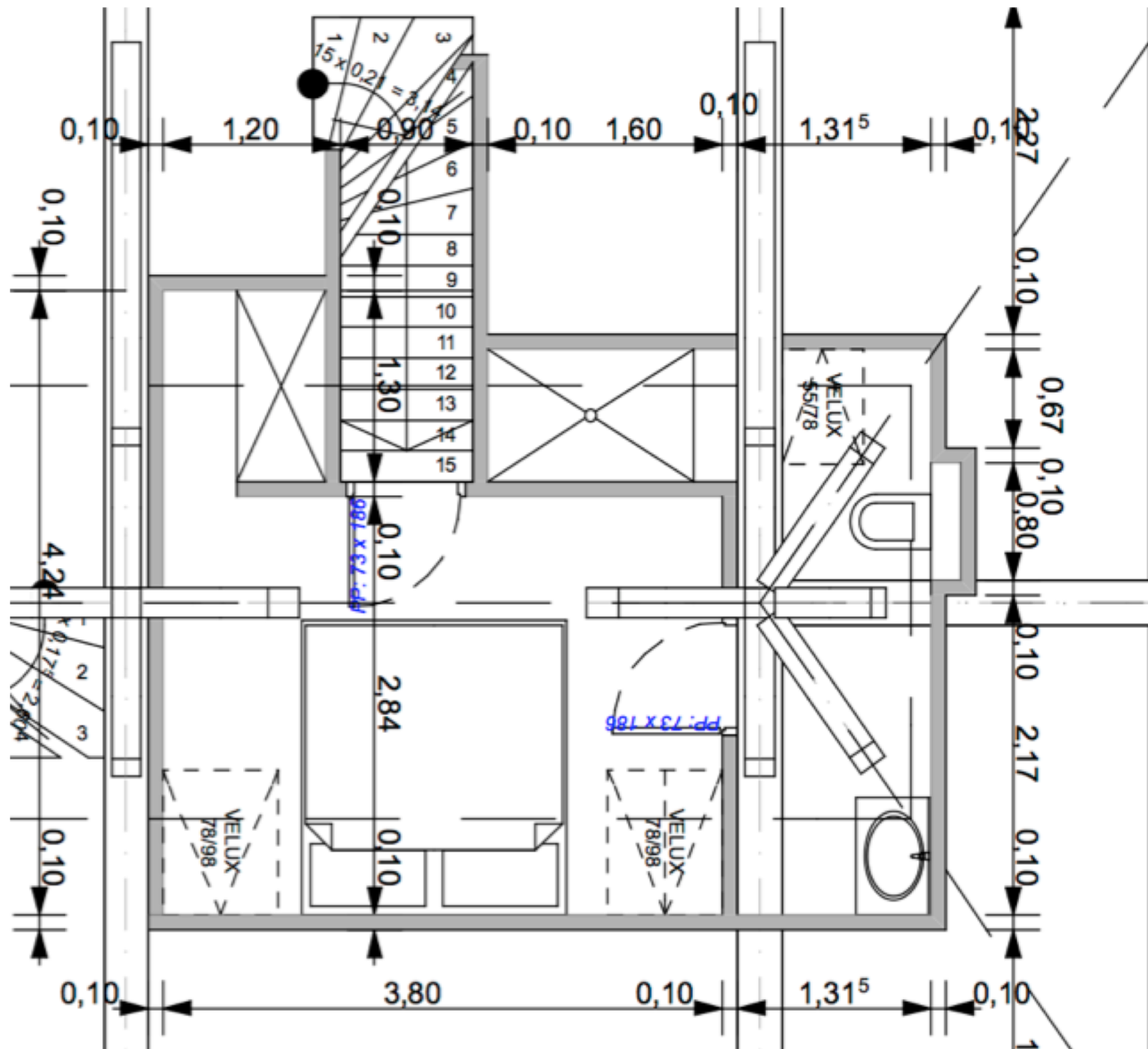


Entrance to all rooms through a staircase in the left tower

ROOM 101 – ACCESS THROUGH AN INDEPENDENT STAIRCASE



ROOM 101 (SECOND FLOOR)



CLASSIC SUITE 101



BATHROOM 101



The image is a detailed architectural floor plan of a building. It features three main rooms labeled in red: 102, 103, and 104. Room 104 is specifically labeled "room for our staff". The plan includes various rooms, corridors, and structural elements, with dimensions provided in meters. The layout shows a central corridor system connecting the rooms. Room 102 is located in the upper right, Room 103 in the lower right, and Room 104 in the lower left. The plan also shows a staircase and several smaller rooms and corridors. Dimensions are indicated by lines with arrows and numerical values. The drawing is a technical architectural representation with precise lines and labels.

104 (room for our staff)

102

103

CLASSIC SUITE 102



BATHROOM 102



CLASSIC SUITE 103



BATHROOM 103

